

LOT 1405  
 QUAD 105 D/14  
 TKC C-9B  
 Plan 88077 CLSR  
 2003-0231 LTO

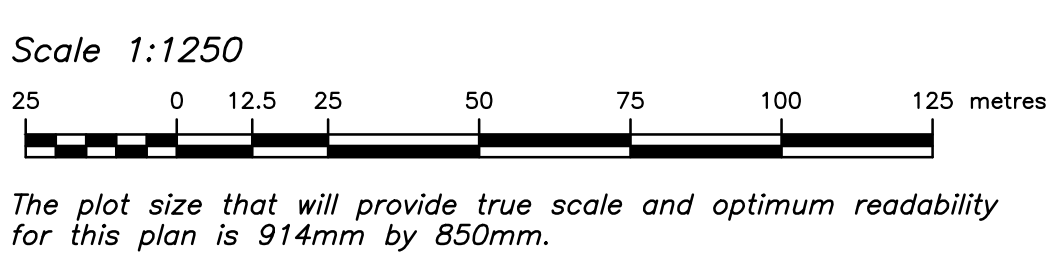
Lot 439  
 Group 804  
 Plan 52136 CLSR  
 26864 LTO

**Parcel A**  
 Quad 105 D/14  
 Area= 18.9±ha

SKETCH PLAN OF PROPOSED SUBDIVISION  
**LOTS 1 TO 210 AND ROADS**  
**and**  
**QUAD LOTS A AND B,**  
**QUAD 105 D/14**

(Comprising Lot 1558, Quad 105 D/14  
 Plan 103882 CLSR, 2015-0011 LTO  
 and Lot 439, Group 804  
 Plan 52136 CLSR, 26864 LTO  
 and Vacant Yukon Land)  
 Lot numbers are subject to change.

Whistle Bend Subdivision  
 Whitehorse,  
**YUKON**



**LEGEND:**

Bearings are UTM Grid, and are referred to the Central Meridian of UTM Zone 8, (Longitude 135° West) and based on Plan 103882 CLSR, 2015-011 LTO.

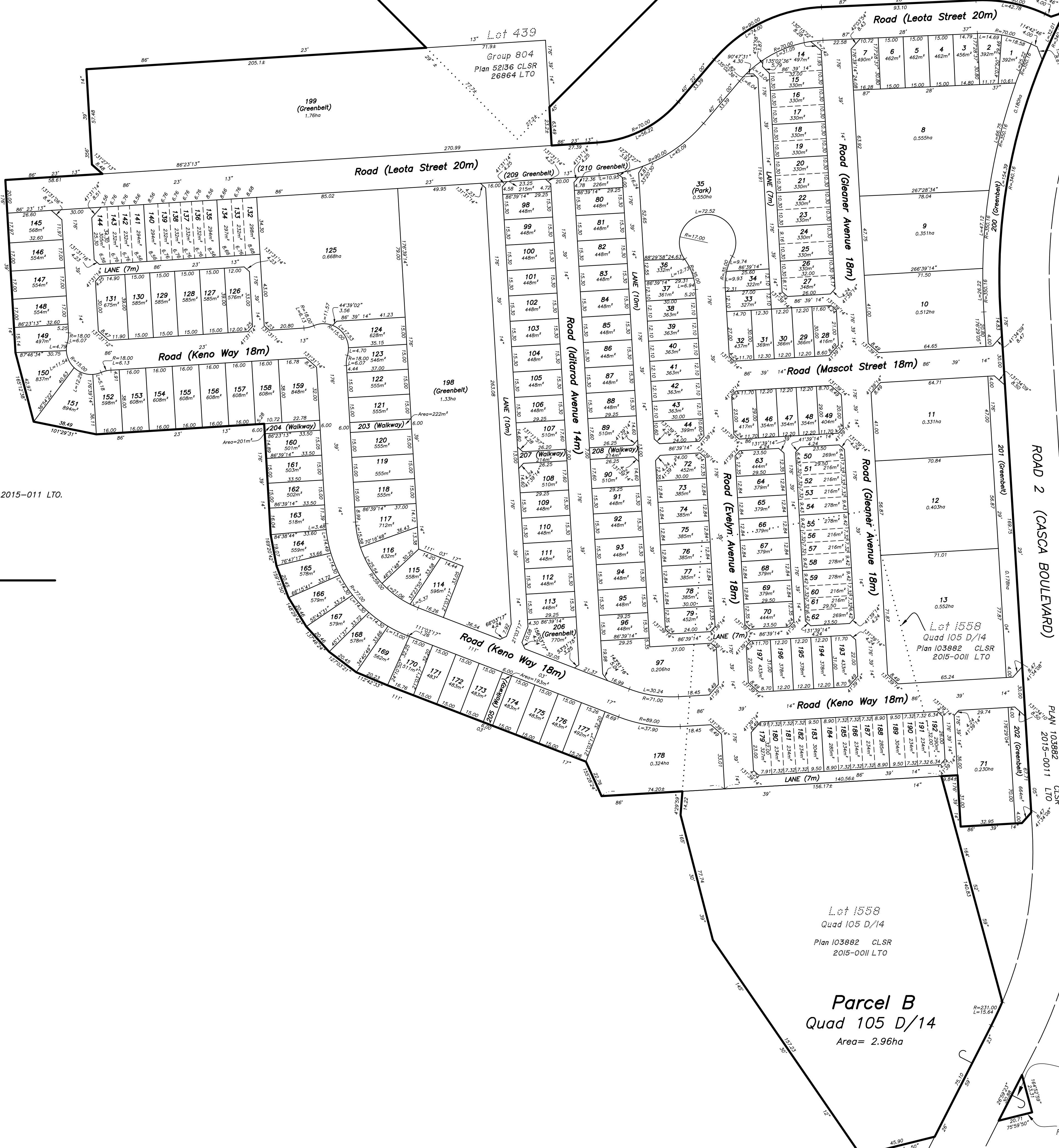
Distances shown are horizontal at general ground level and are expressed in metres.

Distances prefixed by L denotes arc length.

Distance prefixed by R denotes radius.

Proposed Subdivision dealt with by this plan bounded thus . . . . .

Bearings and distances subject to field survey.



WHISTLE BEND  
 PHASE 3 SUBDIVISION

LOT 414  
 Plan 105255 CLSR  
 2016-0047 LTO

LOT 416  
 Plan 105255 CLSR  
 2016-0047 LTO

Lot 1558  
 Quad 105 D/14  
 Plan 103882 CLSR  
 2015-0011 LTO

**Parcel B**  
 Quad 105 D/14  
 Area= 2.96ha

**Parcel B**  
 Quad 105 D/14  
 Area= 241m<sup>2</sup>

Lot 1558  
 Quad 105 D/14  
 Plan 103882 CLSR  
 2015-0011 LTO