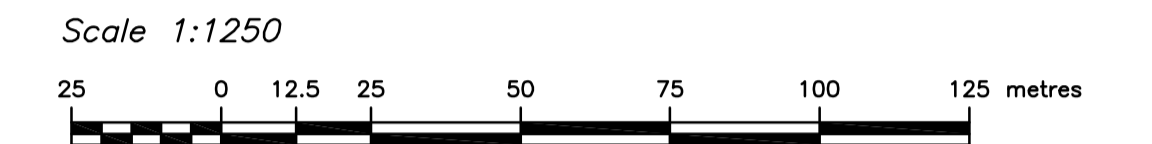


SKETCH PLAN OF
PROPOSED LOTS 1 TO 177, ROADS AND LANES

Consisting of 168 Lots, 3 Greenbelts, 1 Park, 2 Walkways, 3 PUL's

WHISTLE BEND SUBDIVISION
CITY OF WHITEHORSE
YUKON

Note: Lot numbers are subject to change once final lot numbers are issued by the Surveyor General.



The plot size that will provide true scale and optimum readability for this plan is 609mm by 1050mm.

LEGEND:

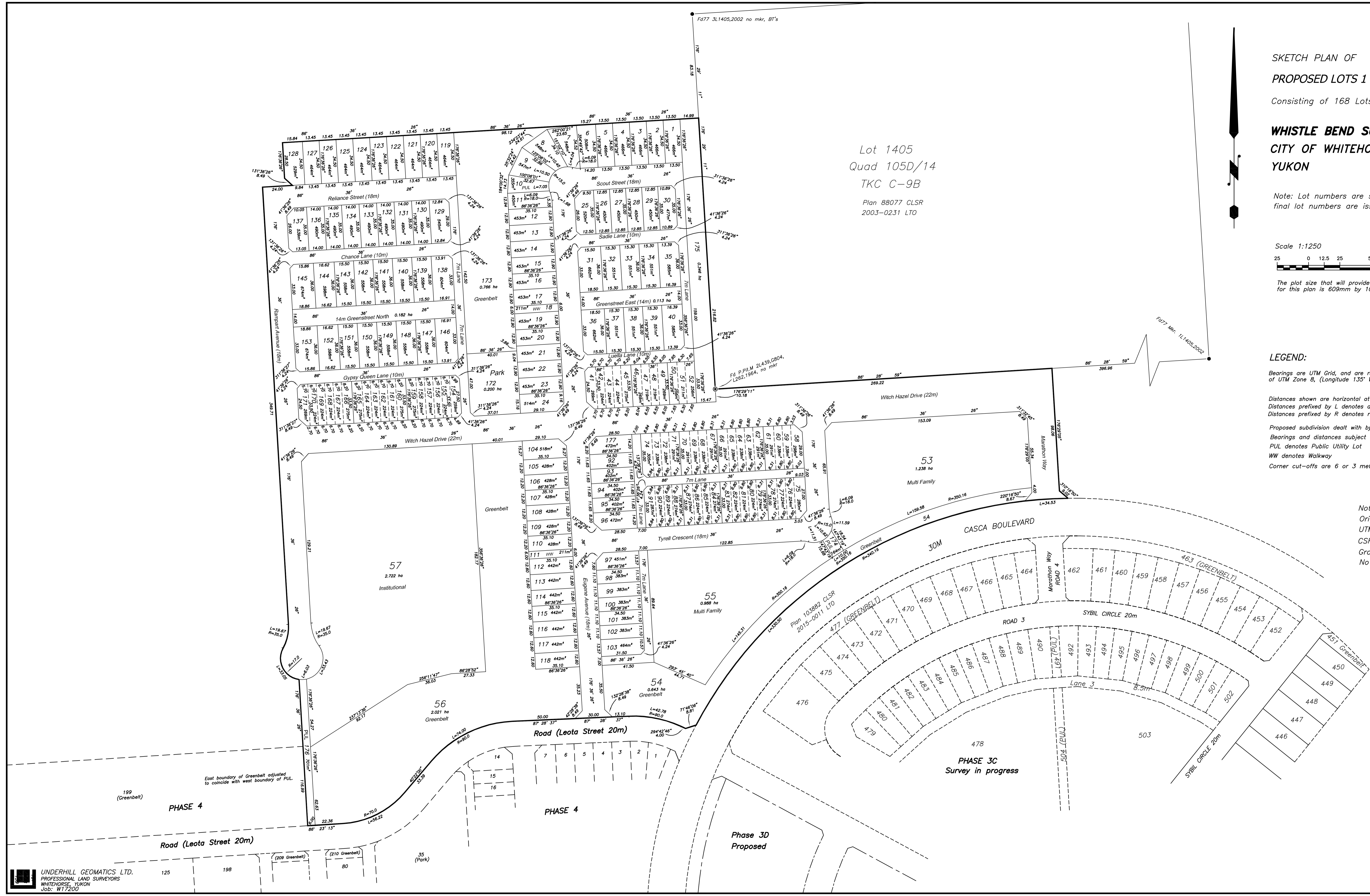
Bearings are UTM Grid, and are referred to the Central Meridian of UTM Zone 8, (Longitude 135° West).

Distances shown are horizontal at general ground level and are expressed in metres. Distances prefixed by L denotes arc length. Distances prefixed by R denotes radius.

Proposed subdivision dealt with by this plan bounded thus . . .
Bearings and distances subject to field survey.
PUL denotes Public Utility Lot
WW denotes Walkway
Corner cut-offs are 6 or 3 metres.

Note: Drawing on new Whistle Bend Ground Datum Origin at Point 1
UTM N 6737653.153 E 494916.231 EL 681.549
CSF 0.999492
Ground N 150000 E 50000 EL 681.549
No rotation

Lot 1405
Quad 105D/14
TKC C-9B
Plan 88077 CLSR
2003-0231 LTO



Whitehorse City of Whitehorse
Planning & Development Services
Subdivision Sketch Plan Approval
FILE NUMBER: _____ DATE: _____
APPROVED BY: _____
Dan Curtis, Mayor
Norma Felker, Assistant City Clerk