

CHADBURN LAKE PARK

Management Plan

Planning Process & Context

The Chadburn Lake Park Management Plan will:

- Identify recreational, environmental, and heritage values
- Develop attainable implementation items
- Identify strategic partnerships
- Provide direction on how the City should evaluate proposals for new or expanded uses in the park

The question we're seeking to answer:

"How should the City manage Chadburn Lake Park's recreational, heritage, and environmental values while respecting individual and community needs and rights?"

What we've already done

- 40+ Key-informant interviews
- 'I heart Chadburn' Canada Games Centre campaign
- Civically online engagement opportunity
- Desktop background research
- Background Report
- Heritage Resources Overview Assessment
- Aggregation of existing environmental studies

What's next?

- Hold Ideas Fair (*we are here!*)
- Report back what was heard
- Share Draft Management Plan and explain how public feedback was considered
- Edit draft plan based on input received
- Adopt plan (anticipated June 2016)

CHADBURN LAKE PARK

Management Plan

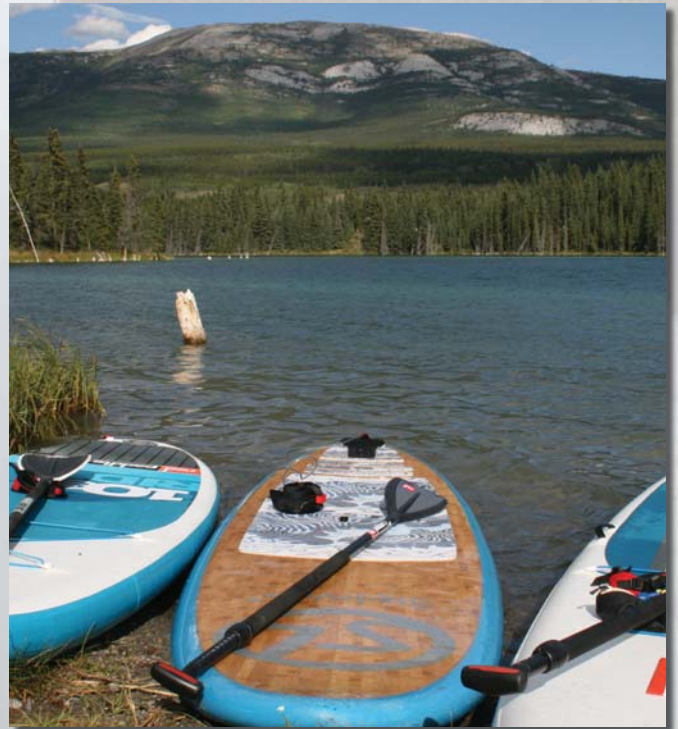
Planning Process & Context

Where did Chadburn Lake Park come from?

- The City has 5 Regional Parks that were identified in the 2010 OCP for their recreational, environmental and heritage values:
 - Chadburn Lake, McIntyre Creek, Paddy's Pond / Ice Lake, McLean Lake, and Wolf Creek
- The 2014 Regional Parks Plan provides a guiding framework for future park-specific park management plans
- Chadburn Lake Park is a public asset that provides access to world-class wilderness:
 - It is the largest municipal park in Canada
 - Over 18 Stanley Parks could fit in Chadburn Lake Park

Who is the City working with?

- Whitehorse Trails and Greenways Committee
- Yukon Government
- Ta'an Kwäch'än Council
- Kwanlin Dün First Nation
- Environmental NGOs
- Community organizations
- Relevant businesses



How to stay involved

www.whitehorse.ca/chadburn

Join our mailing list: regionalparks@whitehorse.ca



CHADBURN LAKE PARK

Management Plan

Commitment

Values-based Public Engagement

The Chadburn Lake Park management planning process abides by the International Association for Public Participation's Core Values.



International Association
for Public Participation

IAP2 Core Values of Public Participation

As an international leader in public participation, IAP2 has developed the "IAP2 Core Values for Public Participation" for use in the development and implementation of public participation processes. These core values were developed over a two year period with broad international input to identify those aspects of public participation which cross national, cultural, and religious boundaries. The purpose of these core values is to help make better decisions which reflect the interests and concerns of potentially affected people and entities.

Core Values for the Practice of Public Participation

1. Public participation is based on the belief that those who are affected by a decision have a right to be involved in the decision-making process.
2. Public participation includes the promise that the public's contribution will influence the decision.
3. Public participation promotes sustainable decisions by recognizing and communicating the needs and interests of all participants, including decision makers.
4. Public participation seeks out and facilitates the involvement of those potentially affected by or interested in a decision.
5. Public participation seeks input from participants in designing how they participate.
6. Public participation provides participants with the information they need to participate in a meaningful way.
7. Public participation communicates to participants how their input affected the decision.

For more information, visit the IAP2 Web site at www.iap2.org.

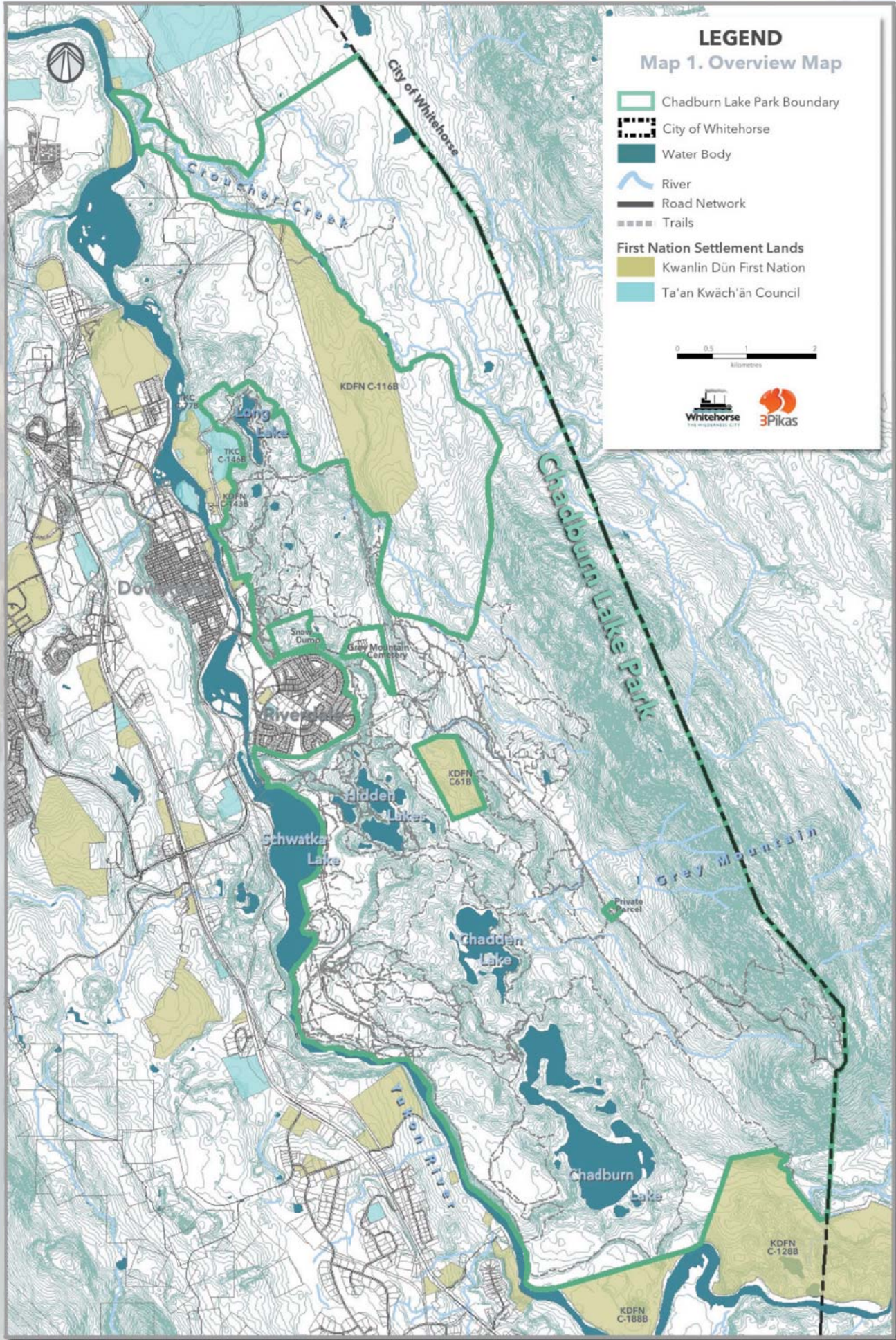
(C) Copyright 2007 International Association for Public Participation

Our Commitment to you:

- Our goal is to increase community trust by integrating greater transparency and integrity in the public engagement process.
- We will share input received and explain how your concerns and aspirations were considered in the planning process.
- We will explain why public input is or is not reflected in the draft plan.
- The City of Whitehorse will be the final decision-maker.



Chadburn Lake Park Overview



CHADBURN LAKE PARK

Management Plan

Environmental Values

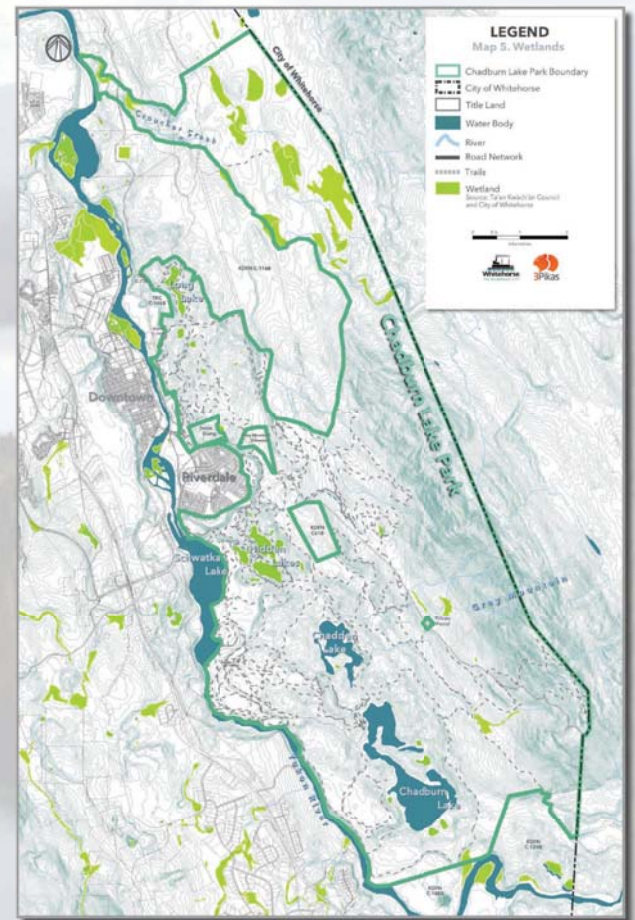
Major Features

- The Park includes three different sub-watersheds that all connect to the Yukon River. Within these, Chadburn Lake, Chadden Lake, Hidden Lakes, Long Lake and Lake Biathlon are all found.
- Croucher Creek is another major drainage system that borders the park and is home to chinook, lake chub, long nose suckers, rainbow trout, arctic grayling and other fish species.
- A wide diversity of boreal vegetation and terrain including valley bottom, flood plain, open slopes, incised canyon, eskers and ridges, mountaintop (Grey/Canyon Mountain, 1519m).
- Nine landscape types, each composed of various ecological communities and habitat types (e.g. mixedwood riparian forests, coniferous bog, etc)
- High diversity of migratory and resident wildlife notably including woodland caribou, little brown bat, grizzly bear, moose and a huge variety of bird species

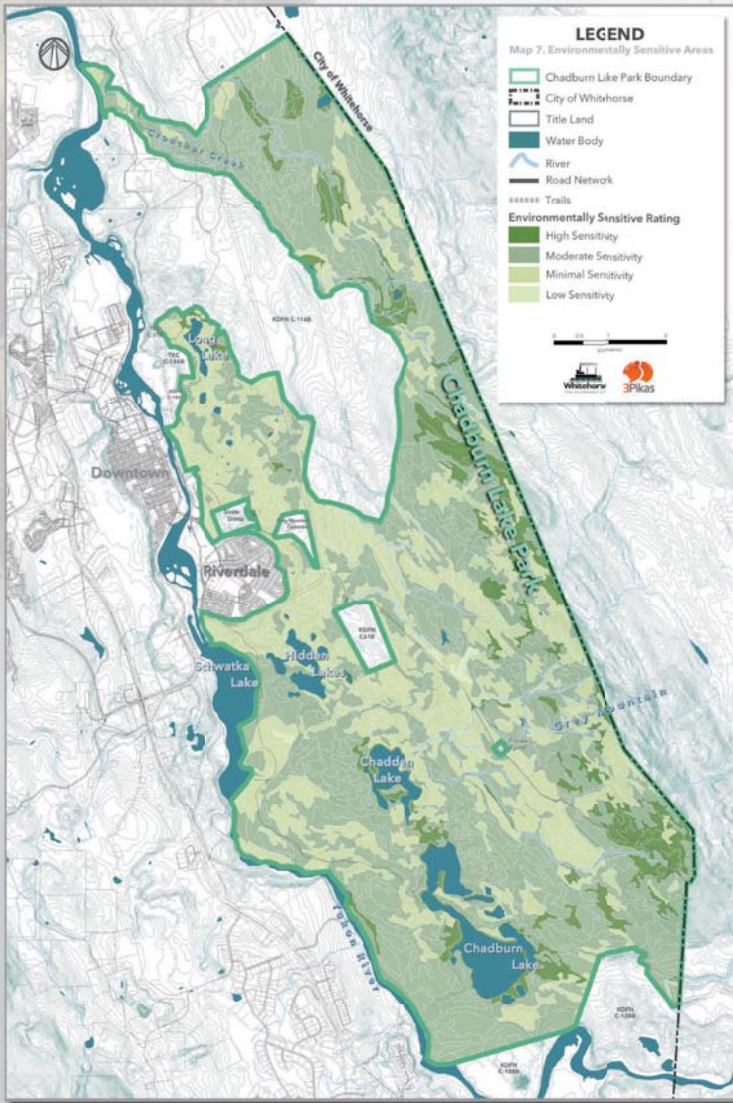
Sensitivity Classification Map

- The entire park area was assessed using available ecological information, habitat values, and degree of disturbance by humans (e.g. roads, power lines, etc.)
- Sensitive areas have been categorized into High, Moderate, and Minimal sensitivity to current or future disturbance. This is based upon their current ecological condition, quality of habitat to wildlife species, and contribution to the diversity and continuity of the park.
- A fourth category, Low Sensitivity, includes lands that contribute little or no value to the overall diversity of vegetation, soils and wildlife habitat.

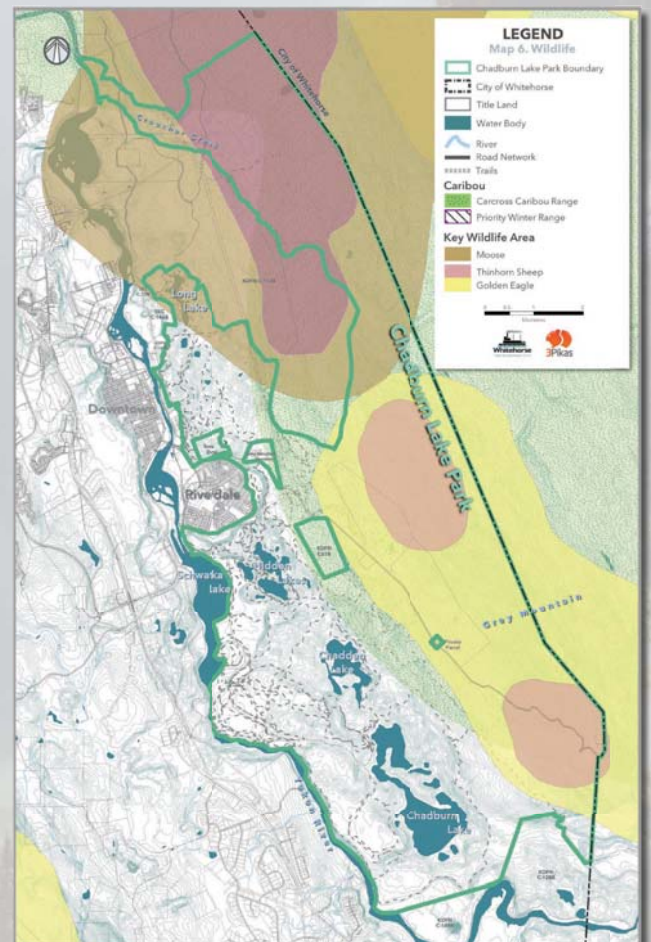
Wetlands



Environmentally Sensitive Areas



Wildlife



CHADBURN LAKE PARK

Management Plan

Heritage Values

Cultural Setting

- The City is working with two First Nations to ensure that their cultural and heritage values are reflected in the plan. The park is situated in the traditional territories of Kwanlin Dün First Nation and Ta'an Kwäch'än Council.
- The Tutchone peoples, like all Yukon First Nations, were highly mobile, following the same basic seasonal cycle. In the summer, small domestic units gathered to catch, dry and store fish for the winter months.
- Lieutenant Schwatka noted the location of camps and villages in his account of his 1885 traverse of the area. Although no villages were inhabited year-round, people would return to good fishing and/or hunting spots year after year.

Traditional Uses

- Much of the known traditional use by First Nations is focused around the Yukon River corridor, with fish camps connected by a network of trails.
- Trails used for seasonal hunting extended to Long Lake, Chadburn Lake, and Grey Mountain, and the pre-Schwatka Lake riverbanks were well-used for berry picking.

19th Century

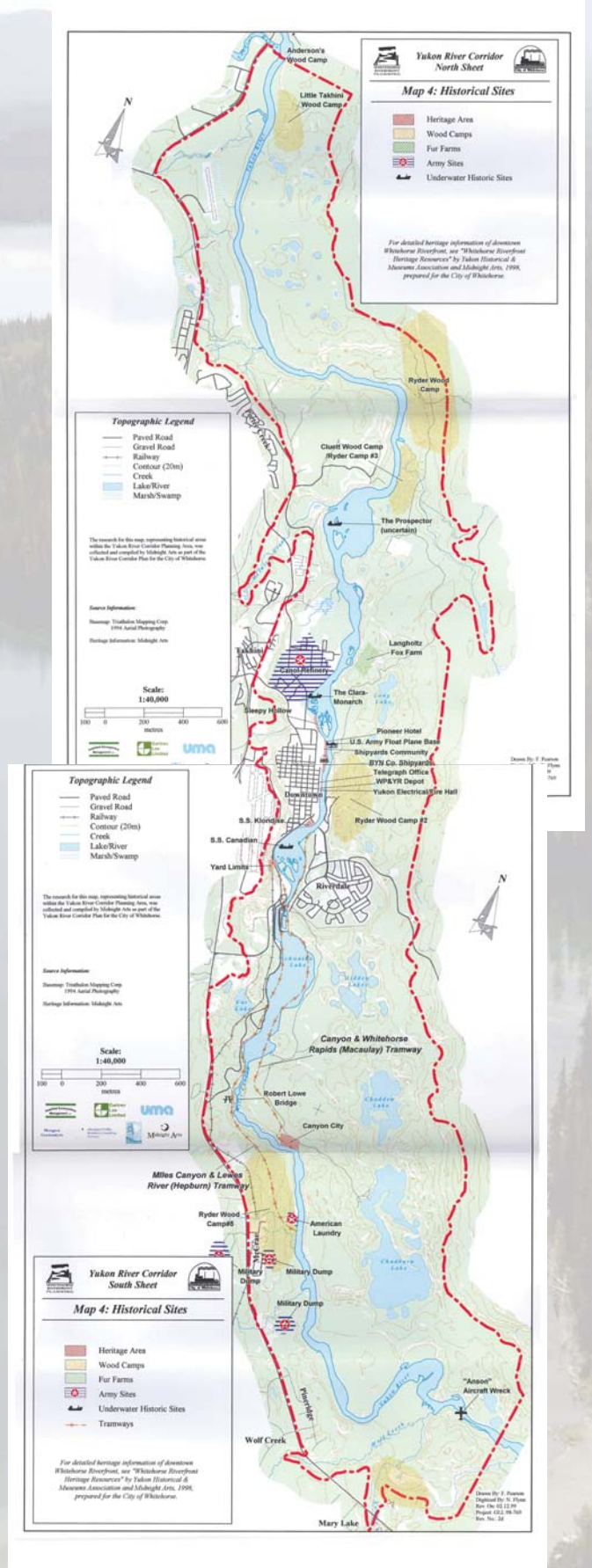
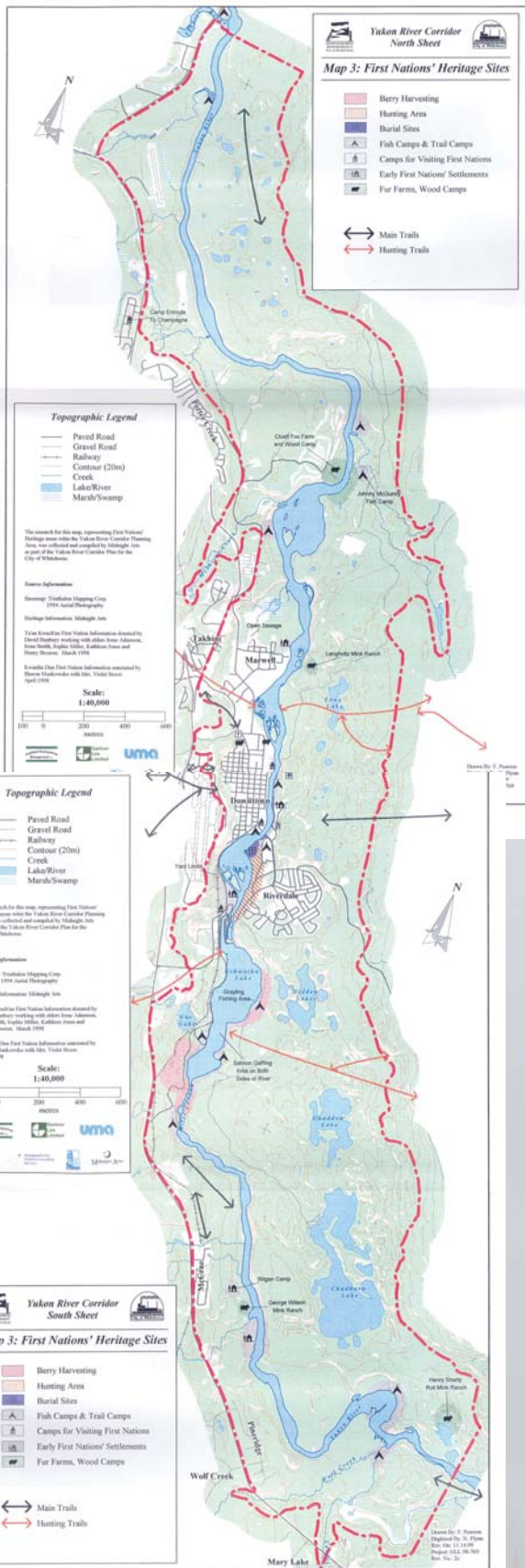
- The first non-aboriginal visitors to the Chadburn Lake Park area were likely to have arrived in the 1840s.
- Most used the First Nation portage route around Miles Canyon/White Horse Rapids on the east side of the river.
- Canyon City developed as the disembarking point to get around the Canyon and Rapids. Norman Macaulay built a tramway to what is now Riverdale. Portions of the tramway route can still be observed.

Early 20th Century

- Several wood camps were located within the park area, which supplied wood to the steamboats. Camps were at the area north of the present day hospital, Croucher Creek, and the Hidden/Chadden Lakes area.
- Fur farming also became a well-subscribed industry in the area. There were known fur farms located in the Croucher Creek and Long Lake areas, and Canyon City.

Known Heritage Values

Maps from Yukon River Corridor Plan (1999)



CHADBURN LAKE PARK

Management Plan



Recreational Values

History

- The Robert Lowe footbridge at Miles Canyon was built in 1922 and enabled walking and picnicking in the area
- Downhill skiing and ski jumping took place at the “ski bowl” located just north of the present-day hospital (1920s-1940s)
- Development of Riverdale and the three gravel roads into the park enabled a dramatic increase in the intensity and diversity of recreational activity in the area
- Yukon Voyageurs Canoe Club built a clubhouse at Chadburn Lake that hosted regattas in summer and snowmobile racing in winter
- Whitehorse Rifle and Pistol Club and Biathlon Yukon established their facilities on Grey Mountain Road in 1985

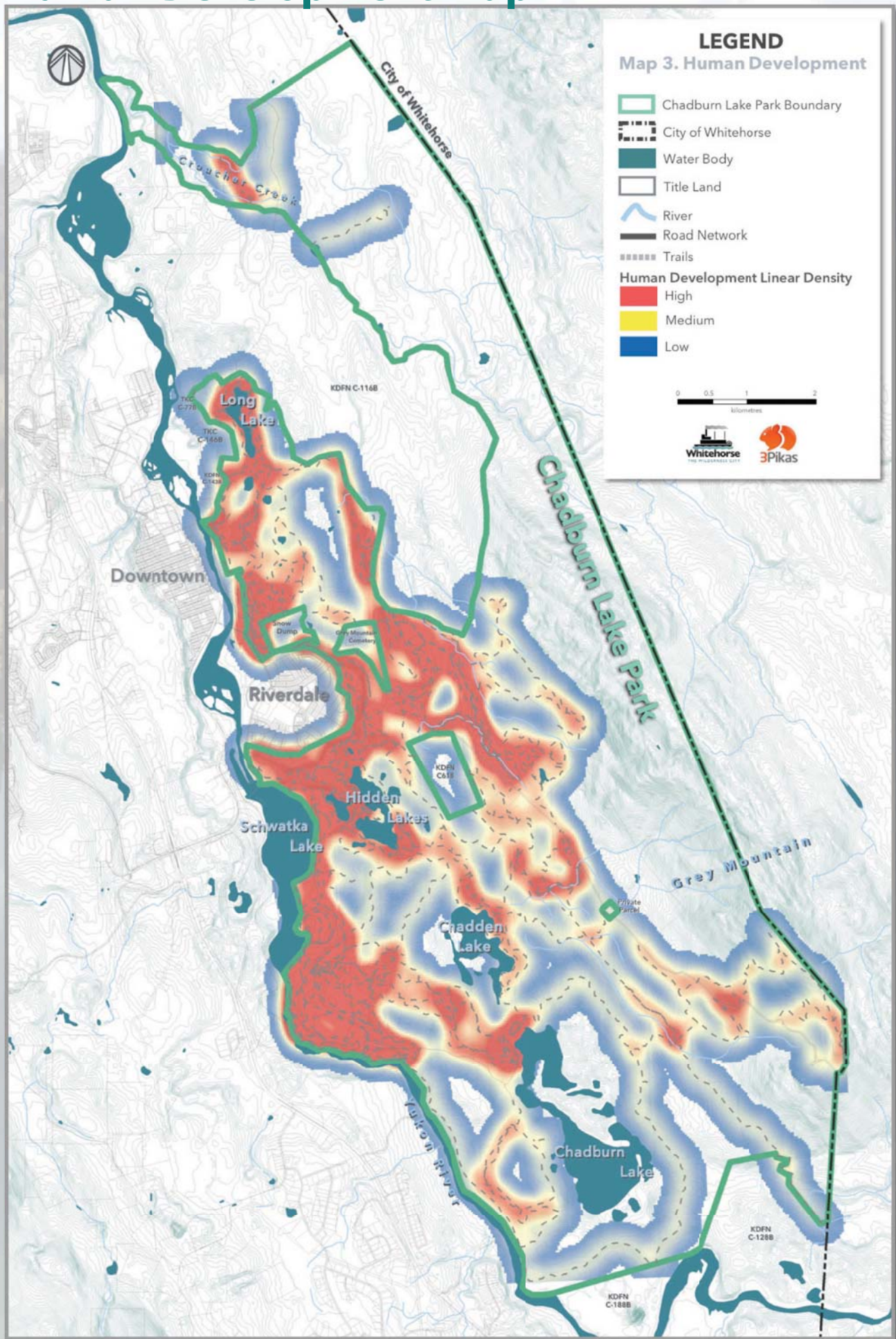
Current Recreation Uses

- 260+ km of trails, varying from old woodcutting roads to purpose-built mountain bike singetrack
- Facilities are basic, but include several day use areas with some amenities
- Tourism and Commercial uses date back to the gold rush. Today, the park is used for guided hikes, sightseeing, paddling clinics, mountain bike tours and instruction
- Several annual events take place in the park, including 24 Hours of Light mountain bike race and Yukon River Trail Marathon

Activities include:

- | | | |
|-----------------------------|----------------------------|----------------------------|
| • Berry picking | • Sailing | • Cross-country skiing |
| • Swimming | • Picnicking | • Wildlife viewing |
| • Kayaking | • Running | • Orienteering |
| • Canoeing | • Stand Up paddle boarding | • Paragliding |
| • Snowmobiling | • Fishing | • Rock climbing/bouldering |
| • Mountain (and fat) biking | • Bird watching | • Geocaching |
| • Dirt biking | • Snowshoeing | |
| • Sightseeing | • Hiking | |

Human Development Map



CHADBURN LAKE PARK

Management Plan

Vision

Regional Parks Plan Vision:

"The vision for Whitehorse Regional Parks are places and spaces that inspire and motivate current and future residents and visitors to discover, enjoy, and value the natural world through outdoor recreation; that protect the integrity of its ecosystems and biodiversity; and that provide the foundation of Whitehorse's unique wilderness character and quality of life."

2014 Regional Parks Plan

What do you want Chadburn Lake Park to look and feel like in the future?

Food for thought:

- How does Chadburn Lake Park fit in the above Regional Parks Plan vision?
- What do you want Chadburn to look and feel like in, say, 10 years?
- What are your hopes and expectations for the future?

How to share:

Option #1: 6-Word Story

Tell us a 6-word story that describes your vision for Chadburn Lake Park

Option #2: Everyone's an artist!

Draw a picture that represents your vision

CHADBURN LAKE PARK

Management Plan

Values

2014 Regional Parks Plan Values:

1. *Thriving Environment*
2. *Vibrant Citizen and Community Development*
3. *Excellence in Planning and Management*

Food for thought:

- How does Chadburn Lake Park fit in the above Regional Parks Plan values?
- Why is Chadburn Lake Park important to you?
- What is your favourite memory in Chadburn Lake Park?

How to share:

Option #1: Sharing Circle — Storytellers and Story-Listeners

- What makes Chadburn Lake Park special for you?
- What is the one thing you would never want to change about Chadburn Lake Park?
- Share an experience in the park that made you smile.

Option #2: iPad

- Show us your favorite places in Chadburn Lake Park online using Civicly

Option #3: #iheartchadburn selfie station

- Tell the world why you love Chadburn Lake Park!

CHADBURN LAKE PARK

Management Plan

Opportunities and Priorities

2014 Regional Parks Plan Goals:

- 1. Promote environmental health*
- 2. Promote outdoor recreation for human health and wellness*
- 3. Support community stewardship, education, and partnerships*
- 4. Improve accountability, planning, and management*

What are your ideas for Chadburn Lake Park? Which ideas are priorities for you?

Food for thought:

- How does Chadburn Lake Park fit in the above Regional Parks Plan goals?
- How would you enhance Chadburn's recreational, environmental, and heritage values?
- What are your ideas for Chadburn?

How to share:

Option #1: Nominal Grouping

- One idea per sticky-note - write big!
- Facilitator will group and label as themes emerge

Option #2: Dot-mocracy

- Place stickers on your priorities

CHADBURN LAKE PARK

Management Plan

Challenges & Solutions

What are challenges? What are possible solutions?

Food for thought:

Park Management

- Can you identify damaged areas?
- Is there any infrastructure that needs replacing or upgrading?
- Low-impact commercial activities already take place in the park, such as paddling lessons. What is an appropriate level of commercial activity in the park?

Communication

- How should park information be communicated?

How to share:

Option #1: Nominal Grouping

- One idea per sticky-note - write big!
- Facilitator will group and label as themes emerge
- Link 'challenges' and 'solutions'

Option #2: Draw it on the map

- Use markers to point out places or draw ideas on the map



CHADBURN LAKE PARK

Management Plan

Partnerships

The City already works with partners to enhance the park experience. We're open to exploring new creative partnerships to support the park.

Are you an individual or part of an organization willing to explore a possible partnership?

Examples of Existing Partnerships

Trails:

- Contagious Mountain Bike Club
- Ski trail grooming (informal volunteer group)

Programming

- YCS Miles Canyon walking tours
- Boréale Explorers bike and walking tours
- SUP Yukon clinics
- Up North Adventures paddling clinics
- YG Wildlife Viewing Program

How to share:

List

- Add you/your organization to our list
- Describe your area of interest