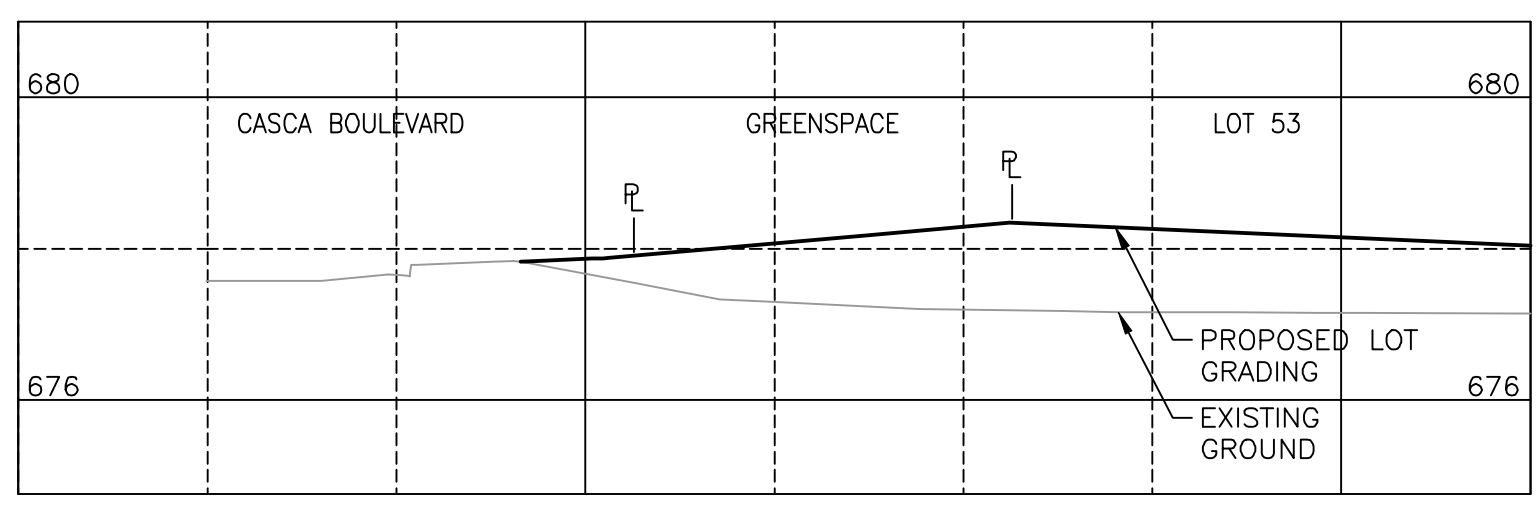
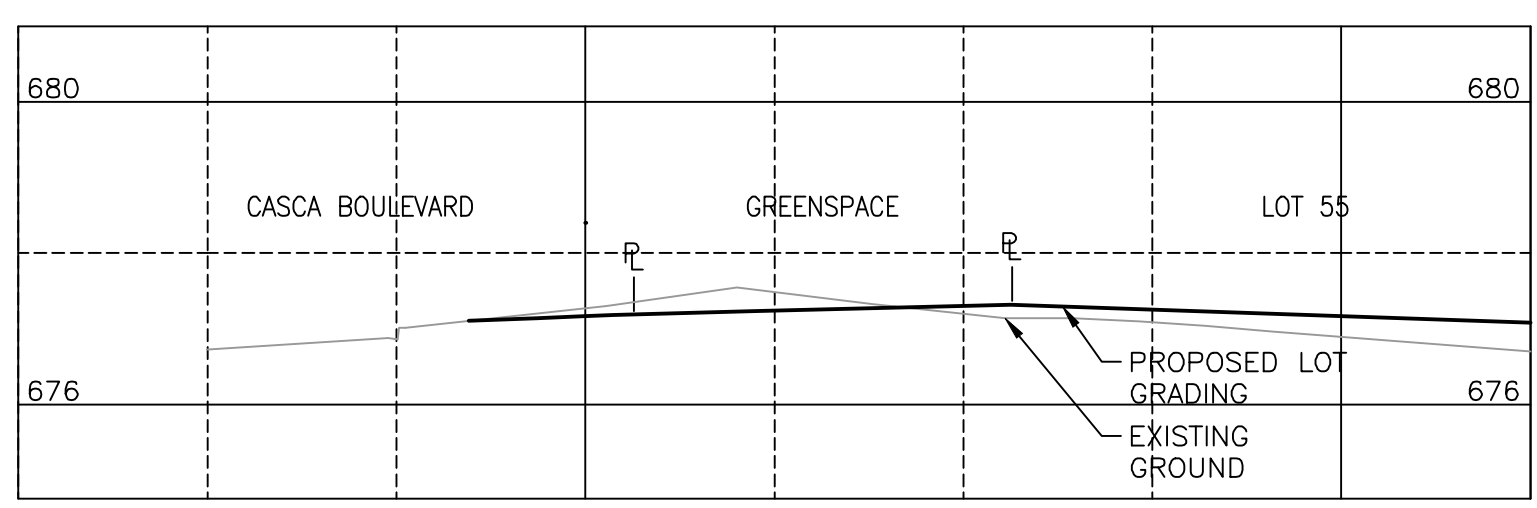


\\183.00\_WhistleBend\Ph3\_3\_8\Working\_Dwg\100\_Civil\Phase 5\2183-05-C-4103.dwg  
2019-04-08, James Stobbs



SECTION 1  
SCALE H 1:200, V 1:100



SECTION 2  
SCALE H 1:200, V 1:100

- NOTES:
1. ALL STATIONING IS IN METRES & DECIMAL THEREOF.
  2. ALL LEGAL PINS AND COORDINATE CONTROL MONUMENTS TO BE PROTECTED. ANY LOSS OR DAMAGE DUE TO CONTRACTOR'S WORKMANSHIP WILL BE REPLACED AT CONTRACTOR'S EXPENSE.
  3. LOCATIONS SHOWN FOR ALL EX. UTILITIES ARE APPROXIMATE ONLY. CONTRACTOR WILL BE REQUIRED TO ENSURE ALL EX. UTILITIES ARE PROPERLY LOCATED TO CONFIRM LOCATION AND ELEVATION, AND ARE PROTECTED DURING CONSTRUCTION.
  4. ALL MATERIALS TO BE DISPOSED OF SHALL BE TAKEN TO DUMP SITES, AS APPROVED BY THE ENGINEER.
  5. ALL MATERIALS AND CONSTRUCTION SHALL BE TO CITY OF WHITEHORSE SERVING STANDARDS MANUAL.
  6. LOT GRADES SHOWN THIS DRAWING REPRESENT FINAL LANDSCAPED ELEVATIONS. CONTRACTOR TO REFER TO PRE-GRADING PLAN FOR CORNER LOT ELEVATIONS DURING CONSTRUCTION.
  7. REFER TO SHEET 2183-05-C-5107 FOR TYPICAL DETAILS ON LOT GRADING TYPES AND STANDARD NOTATION.
  8. FOR TYPICAL LOT DRAINAGE DETAILS, INDICATING FINAL ELEVATIONS OF SETS, REFER TO DRAWING 2183-05-C-5107.
- Const. Date: AUG 2018-AUG 2020  
Signature: \_\_\_\_\_  
Date: \_\_\_\_\_

THE INFORMATION CONTAINED ON THIS DRAWING OTHER THAN CHANGES MADE BY ASSOCIATED ENGINEERING (A.E.) LTD. ORIGINATED FROM SOURCES OTHER THAN THE DESIGN PROFESSIONAL AND ASSOCIATED ENGINEERING (A.E.) LTD. DOES NOT WARRANT OR REPRESENT THAT SUCH INFORMATION IS ACCURATE OR REPRESENTS THE ORIGINAL DESIGN AS CONTAINED IN THE CONTRACT DOCUMENTS.

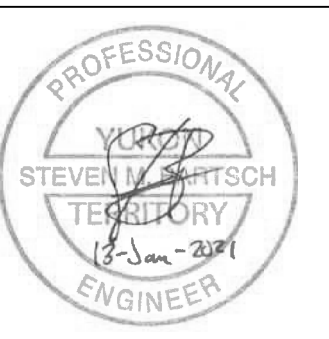
CITY OF WHITEHORSE DESIGN APPROVALS	
PREVIOUSLY SIGNED	SEPT. 13, 2018
MANAGER OF OPERATIONS	DATE
PREVIOUSLY SIGNED	SEPT. 13, 2018
MANAGER OF ENGINEERING SERVICES	DATE
PREVIOUSLY SIGNED	SEPT. 13, 2018
MANAGER OF WATER & WASTE SERVICES	DATE



Suite 301-4109 4th Ave.  
Whitehorse, Yukon  
Canada Y1A 1H6  
Phone: 867-456-2711  
Fax: 604-291-6163

**Associated Engineering**

REVISIONS :			
NO.	DATE	ENG.	SUBJECT
0	21/10/18	S.B.	ISSUED FOR TENDER
1	SEPT. 10 2018	S.B.	ISSUED FOR CONSTRUCTION
2	APR. 8 2019	S.B.	ISSUED FOR CO #1
3	NOV. 30 2020	S.B.	RECORD DRAWINGS



PROJECT :  
**WHISTLE BEND SUBDIVISION  
PHASE 5**

DRAWING TITLE :  
**SURFACE WORKS  
FUTURE LOT GRADES &  
OVERLAND DRAINAGE  
PLAN**

SCALE : 1:1000  
DATE : 2019/04/08  
DESIGN : J.S.  
DRAWN : J.S.  
CHECKED : M.A.  
APPROVED : S.B.

DRAWING NUMBER :  
**2183-05-C-4103**

SHEET :  
- of -

PERMIT TO PRACTICE  
ASSOCIATED ENGINEERING (A.E.) LTD.  
SIGNATURE: \_\_\_\_\_  
Date: 13-Jan-2021  
PERMIT NUMBER PP060  
Association of Professional  
Engineers of Yukon