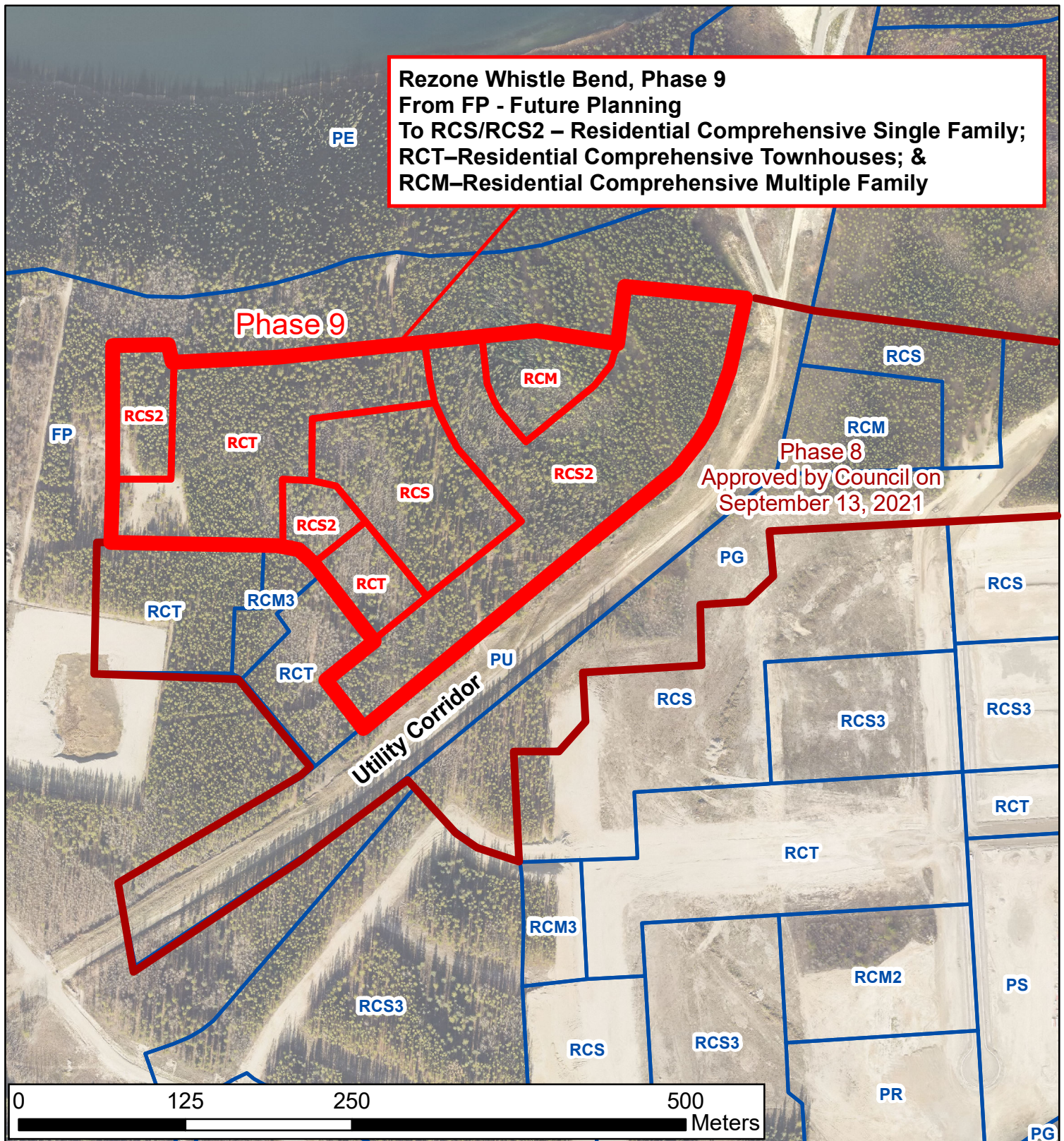


**Rezone Whistle Bend, Phase 9  
From FP - Future Planning  
To RCS/RCS2 – Residential Comprehensive Single Family;  
RCT–Residential Comprehensive Townhouses; &  
RCM–Residential Comprehensive Multiple Family**



DATE:  
Dec 6, 2021

FILE NO:  
Z-12-2021

 Phase 9

## CITY OF WHITEHORSE - PLANNING AND SUSTAINABILITY SERVICES

### Bylaw 2021-42

An application to amend the zoning of approximately 8.5 ha parcel of vacant Commissioner's land, comprising phase 9 of Whistle Bend, to allow for a range and mix of house types.

