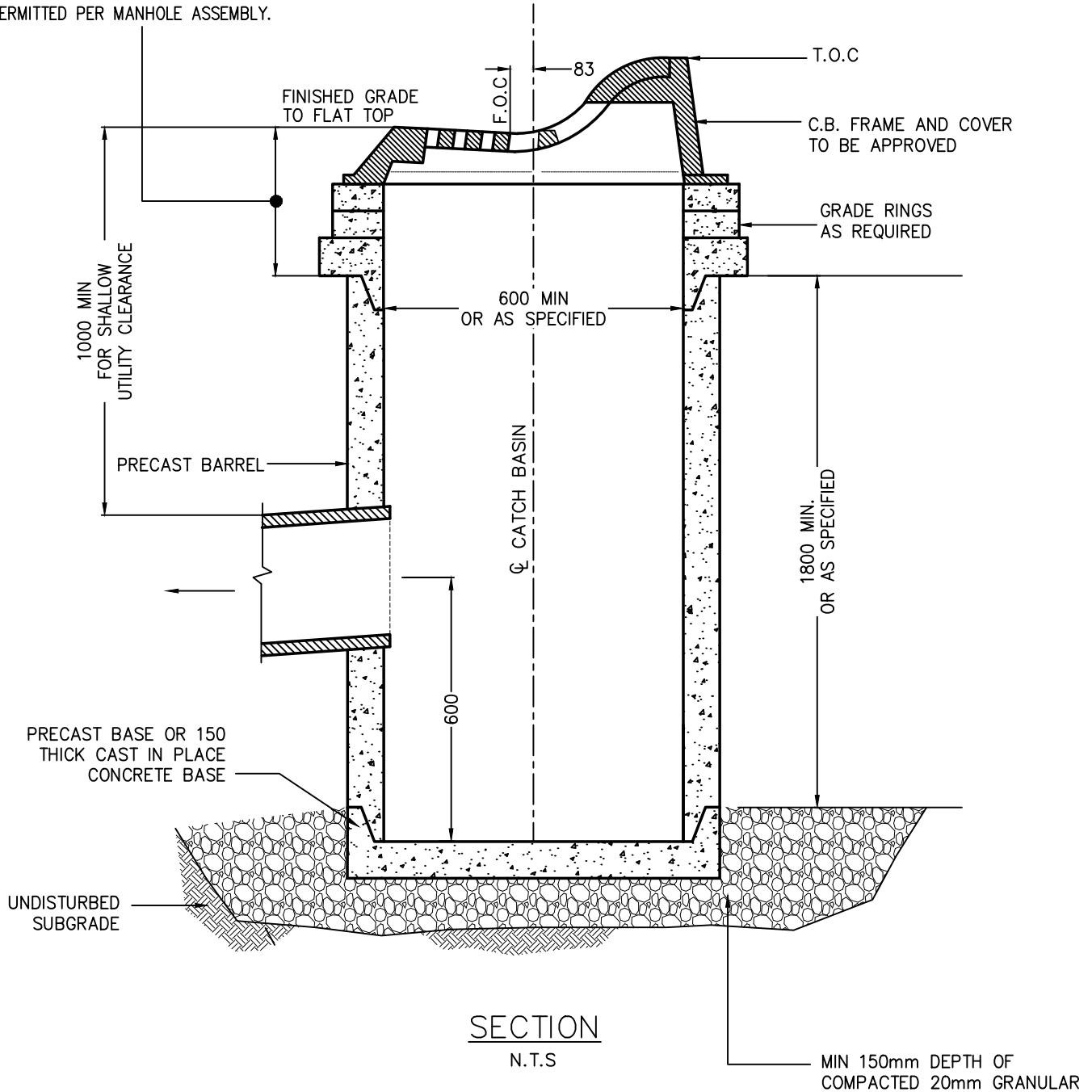


150 MIN/450 MAX. FROM FINISHED GRADE TO TOP OF BARREL. 1 No. 1" GRADE RING PERMITTED PER MANHOLE ASSEMBLY.



**NOTES:**

1. ALL PRECAST MANHOLES MUST CONFORM TO ASTM C478.
2. POURED IN PLACE CONCRETE SHALL HAVE 28 DAYS COMPRESSIVE STRENGTH 27.5 MPa TYPE 50 CEMENT.
3. ALL DIMENSIONS ARE IN MILLIMETRES.
4. BACKFILL WITH SELECT NATIVE OR GRANULAR MATERIAL.
5. CATCH BASIN LEADS TO BE INSTALLED AT MIN. 1% GRADE.



Engineering Department

# ROLLED CURB PRECAST CATCH BASIN WITH SUMP

DATE: OCTOBER, 2020

STD DWG

A4.5