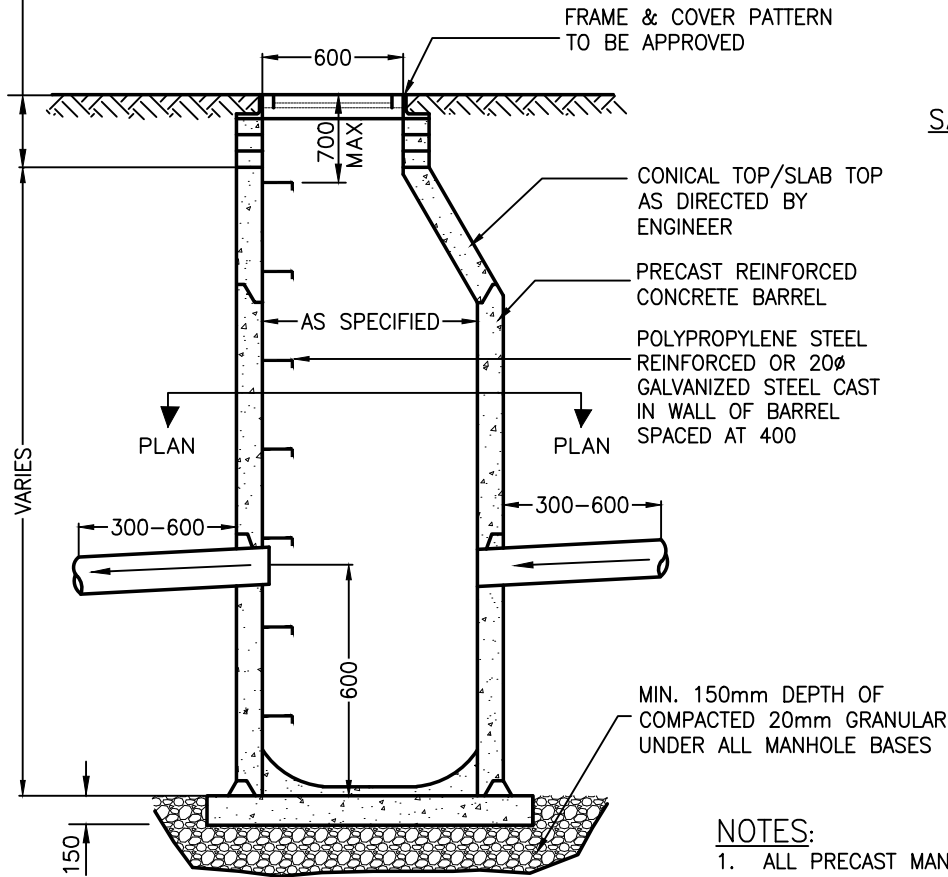
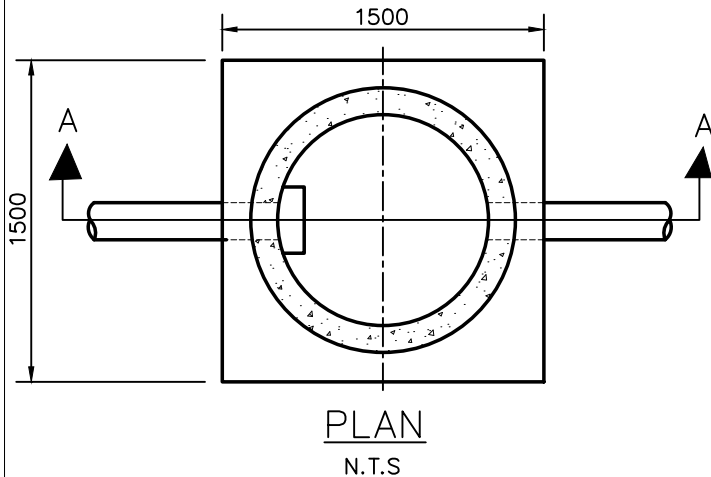


150 MIN / 450 MAX FROM  
FINISHED GRADE TO TOP OF CONE  
OR SLAB TOP. 1 No. 1" GRADE  
RING PERMITTED PER MANHOLE  
ASSEMBLY.

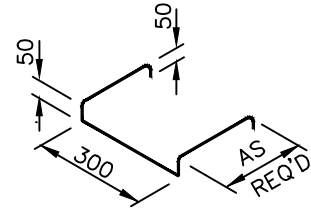


SECTION 'A-A'  
N.T.S



PLAN  
N.T.S

SAFETY TYPE MANHOLE RUNG



NOTES:

1. ALL PRECAST MANHOLES MUST CONFORM TO ASTM C478.
2. POURED IN PLACE CONCRETE SHALL HAVE 28 DAYS COMPRESSIVE STRENGTH 27.5 MPa TYPE 50 CEMENT
3. AN O-RING RUBBER GASKET OR BUTYL RUBBER SEALANT (OR RESPECTIVE APPROVED ALTERNATE) IS TO BE INSTALLED AT EACH BARREL JOINT IN ACCORDANCE WITH MANUFACTURER'S RECOMMENDATIONS.
4. ALL BARREL JOINTS ARE TO BE MORTARED ON THE OUTSIDE.
5. FORM FLOW THROUGH IN PARTIALLY SET CONCRETE & TROWEL SMOOTH.
6. ALL DIMENSIONS ARE IN MILLIMETRES.
7. MAX. DISTANCE FROM RIM TO TOP RUNG IS 700mm
8. SLAB TOPS SHALL BE USED WHEN THE DISTANCE FROM THE BOTTOM OF THE RINGS TO THE MH BASE IS LESS THAN 2.2 m
9. SLAB TOPS SHALL BE USED WHEN THE DISTANCE FROM THE BOTTOM OF THE RINGS TO THE MH BASE IS LESS THAN 2.2 m
10. BACKFILL WITH SELECT NATIVE OR GRANULAR MATERIAL
11. IN SITUATIONS WHERE GRADE RINGS EXCEED MAX. 450mm A BARREL SECTION IS TO BE USED.
12. ACCESS TO MANHOLE TO BE LOCATED OVER MAIN INLET.
13. FIRST SECTION OF PIPE (AT INTERFACE OF MANHOLE) TO BE 300-600mm IN LENGTH.
14. CATCH BASIN LEADS TO BE INSTALLED AT MIN. 1% GRADE.



Engineering  
Department

DATE: OCTOBER, 2020

CATCH BASIN MANHOLE

STD DWG

A4.3