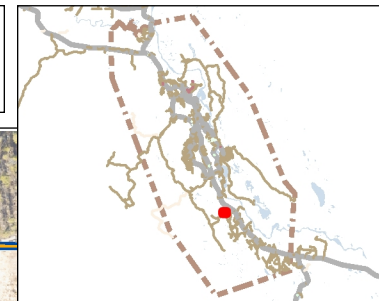




101 Mount Sima Road

Generated:
4/25/2023



101.6 0 50.80 101.6 Meters

NAD_1983_UTM_Zone_8N

This map is a user generated static output from an Internet mapping site and is for reference only. Data layers that appear on this map may or may not be accurate, current, or otherwise reliable.

THIS MAP IS NOT TO BE USED FOR NAVIGATION

1: 2,000



Notes

Conditional use application for an eating and drinking establishment in the IS zone.

30th March 30, 2023

To whom it may concern,

This is a proposal for a development permit for the conditional usage of an eating and drinking establishment at 101 Mt Sima Road, Whitehorse, Y1A 0A8.

Landed Bakehouse has been operating since October 1st 2022 primarily as a wholesale bakery and opening for retail options on Saturday's. We plan to increase our retail hours in the coming months and would like to include a seating option and non-alcoholic beverage service for our customers.

Our intended service and hours would be Thursday through Saturday 8am–4pm. Having Winterlong Brewing next door and parking lot in front of our building provides an enormous amount of appropriate parking as well as a complementary use of the lot and area.

I have contacted and have confirmation via email that Environmental Health would have no objection to this addition with the current facilities.

Please find attached to this application a site plan with parking plan, existing and proposed indoor floor plans.

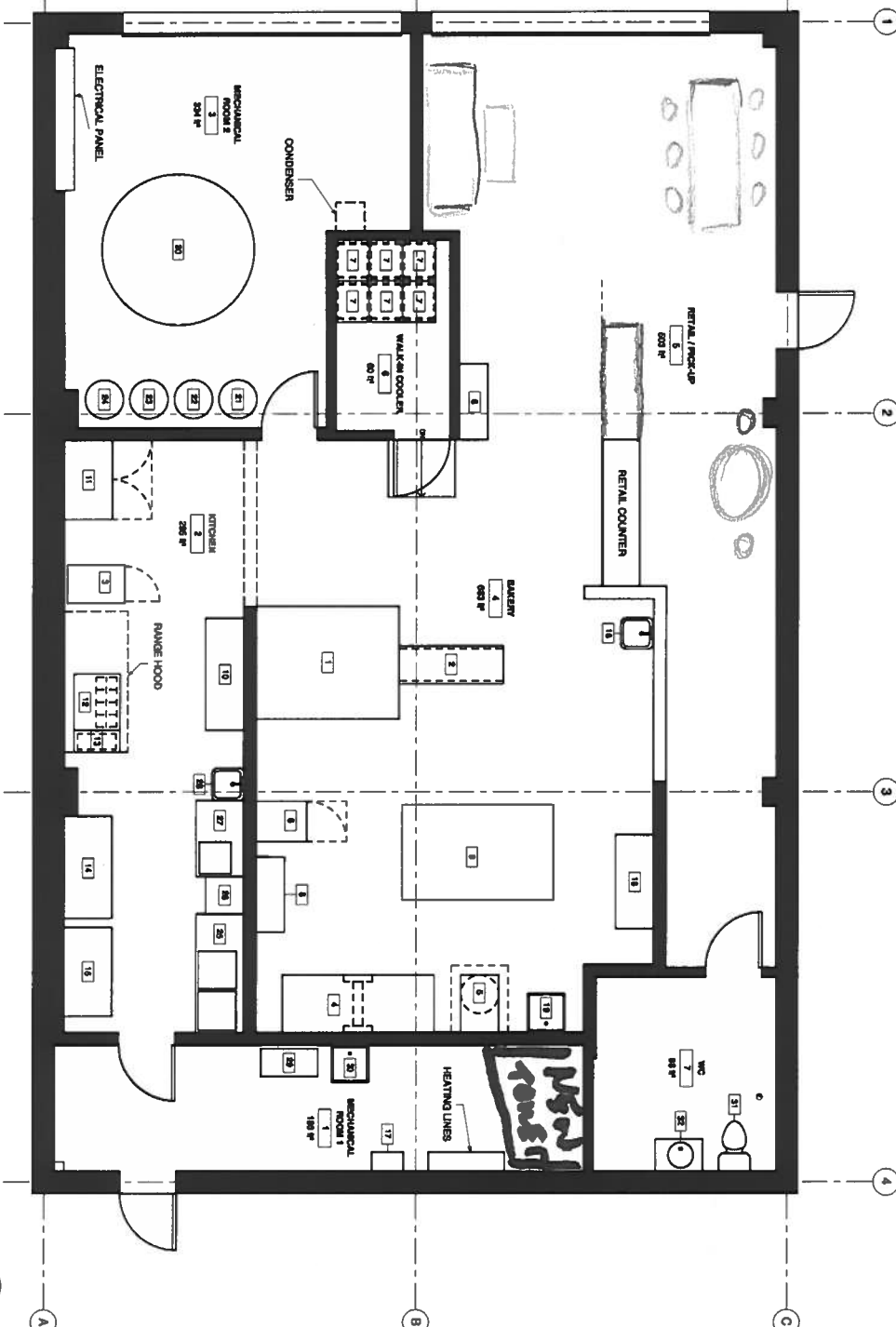
Sincerely
Michael Roberts

PROPOSED SEATING FLOOR PLAN

Item	Type	Qty	W x D x H
1	Round Oven	1	3' x 7' 6"
2	Round Oven	1	3' x 7' 6"
3	Pastry Oven	1	3' x 2'
4	Pastry Oven	1	3' x 2'
5	Pastry Oven	1	3' x 2'
6	Pastry Oven	1	3' x 2'
7	Pastry Oven	1	3' x 2'
8	Pastry Oven	1	3' x 2'
9	Pastry Oven	1	3' x 2'
10	Pastry Oven	1	3' x 2'
11	Pastry Oven	1	3' x 2'
12	Pastry Oven	1	3' x 2'
13	Pastry Oven	1	3' x 2'
14	Pastry Oven	1	3' x 2'
15	Pastry Oven	1	3' x 2'
16	Pastry Oven	1	3' x 2'
17	Pastry Oven	1	3' x 2'

Item	Type	Qty	W x D x H
18	Pastry Oven	1	3' x 2'
19	Pastry Oven	1	3' x 2'
20	Pastry Oven	1	3' x 2'
21	Pastry Oven	1	3' x 2'
22	Pastry Oven	1	3' x 2'
23	Pastry Oven	1	3' x 2'
24	Pastry Oven	1	3' x 2'
25	Pastry Oven	1	3' x 2'
26	Pastry Oven	1	3' x 2'
27	Pastry Oven	1	3' x 2'
28	Pastry Oven	1	3' x 2'
29	Pastry Oven	1	3' x 2'
30	Pastry Oven	1	3' x 2'
31	Pastry Oven	1	3' x 2'
32	Pastry Oven	1	3' x 2'

LEVEL 1
3/8" = 1'-0"



DATE: 10/27/2020
PROJECT: BAKERY FIT-UP
SHEET NO.: A2.0
DRAWN BY: M. ROBERTS
CHECKED BY: M. ROBERTS

NORTHERN FRONT STUDIO
Architecture • Interiors • Design
10-2737 2nd Ave Whitehorse Y1A 0K2 (867) 393-5048
info@northernfront.ca northernfront.ca

BAKERY FIT-UP
Michael Roberts Landed Bakehouse
101 Mount Sima Rd

1	3' x 7' 6"	1	3' x 7' 6"
2	3' x 7' 6"	1	3' x 7' 6"
3	3' x 2'	1	3' x 2'
4	3' x 2'	1	3' x 2'
5	3' x 2'	1	3' x 2'
6	3' x 2'	1	3' x 2'
7	3' x 2'	1	3' x 2'
8	3' x 2'	1	3' x 2'
9	3' x 2'	1	3' x 2'
10	3' x 2'	1	3' x 2'
11	3' x 2'	1	3' x 2'
12	3' x 2'	1	3' x 2'
13	3' x 2'	1	3' x 2'
14	3' x 2'	1	3' x 2'
15	3' x 2'	1	3' x 2'
16	3' x 2'	1	3' x 2'
17	3' x 2'	1	3' x 2'
18	3' x 2'	1	3' x 2'
19	3' x 2'	1	3' x 2'
20	3' x 2'	1	3' x 2'
21	3' x 2'	1	3' x 2'
22	3' x 2'	1	3' x 2'
23	3' x 2'	1	3' x 2'
24	3' x 2'	1	3' x 2'
25	3' x 2'	1	3' x 2'
26	3' x 2'	1	3' x 2'
27	3' x 2'	1	3' x 2'
28	3' x 2'	1	3' x 2'
29	3' x 2'	1	3' x 2'
30	3' x 2'	1	3' x 2'
31	3' x 2'	1	3' x 2'
32	3' x 2'	1	3' x 2'