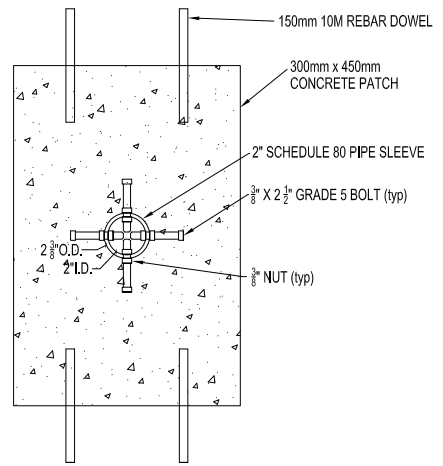
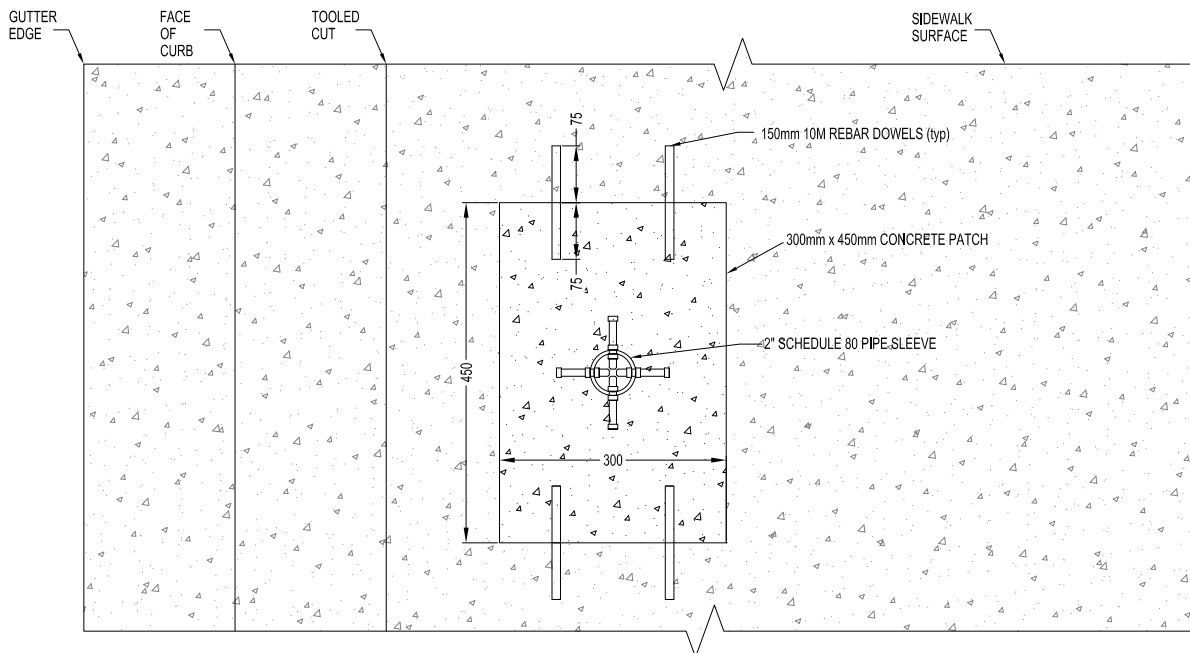


POST AND SLEEVE INSTALLATION



SECTION A-A



PLAN VIEW - POST AND SLEEVE

NOTES:

1. PARKING METER SLEEVE SETBACK FROM FACE OF CURB TO BE AS SPECIFIED BY THE ENGINEER
2. THE SLEEVE IS TO BE PLUMB
3. TOP OF PARKING METER SLEEVE TO BE 50mm ABOVE SIDEWALK SURFACE
4. PARKING METER SLEEVE TO BE 2" SCHEDULE 80 PIPE SLEEVE
5. PIPE SIZES ARE REFERENCED TO IMPERIAL MEASUREMENTS
6. BOLTS TO BE GRADE 5 MINIMUM
7. METER POST TO BE WELDED TO SLEEVE
8. BASE MATERIAL SHALL BE COMPACTED WITH HAND TAMPER PRIOR TO PLACING CONCRETE
9. CONCRETE SPECS SHALL BE AS PER SERVICING STANDARDS MANUAL SECTION 3.15
10. CONCRETE PATCH TO BE 300mm x 450mm OR AS SPECIFIED BY THE ENGINEER
11. CONCRETE PATCH TO BE PINNED TO EXISTING CONCRETE USING 10M REBAR
12. ALL DIMENSIONS ARE IN MILLIMETERS.



Engineering
Department

PARKING METER SLEEVE DETAIL - REPAIR/REPLACEMENT INSTALLATION

DATE: DECEMBER 2023

STD DWG

E2.3