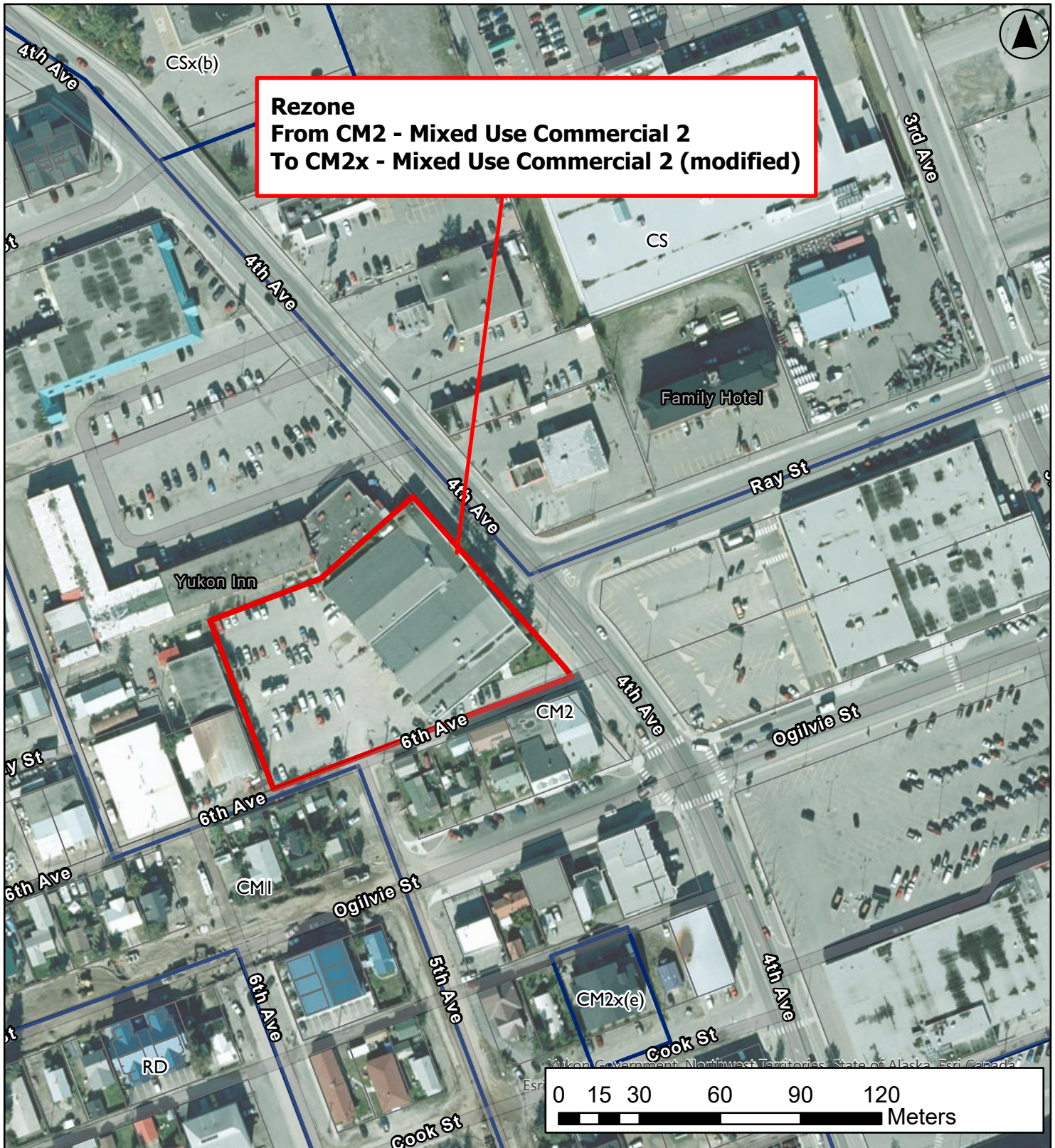





**Rezone  
From CM2 - Mixed Use Commercial 2  
To CM2x - Mixed Use Commercial 2 (modified)**



DATE:  
2/26/2024 1:41 PM

FILE:  
Z-XX-2024 - 4210 4th Ave

 Subject Site

**CITY OF WHITEHORSE - PLANNING AND SUSTAINABILITY SERVICES**

**Proposed Rezoning Application - Location Map**

4210 4th Avenue  
Parcel C Whitehorse

