

CITY OF WHITEHORSE – STANDING COMMITTEES

Monday, November 3, 2025 – 5:30 p.m.

Council Chambers, City Hall

CALL TO ORDER

ADOPTION OF AGENDA

PROCLAMATIONS Indigenous Veteran's Day (November 8, 2025)

DELEGATIONS Sheelah Tolton and Jacob Heigers, CNLP – Front St. Parkade Proposal
Benjamin Pereira, Neighbourly North – 2025 Zoning Bylaw

COMMUNITY SERVICES COMMITTEE – *Councillors Gallina and Melnychuk*

1. New Business

PUBLIC HEALTH AND SAFETY COMMITTEE – *Councillors Boyd and Gallina*

1. Food for Fines Program
2. New Business

CORPORATE SERVICES COMMITTEE – *Councillors Melnychuk and Middler*

1. Upcoming Procurements (November/December) – For Information Only
2. New Business

CITY PLANNING COMMITTEE – *Councillors Middler and Hamilton*

1. New Business

DEVELOPMENT SERVICES COMMITTEE – *Councillors Hamilton and Morris*

1. New Business

CITY OPERATIONS COMMITTEE – *Councillors Morris and Boyd*

1. Snow and Ice Control Policy Update
2. New Business



PROCLAMATION

INDIGENOUS VETERANS DAY

November 8, 2025

WHEREAS Indigenous Veterans Day is observed in Canada in recognition of more than 200 years of Indigenous contributions to military service; and

WHEREAS many Indigenous Peoples overcame challenges such as travelling far distances to enlist, learning new languages, and experiencing discrimination, including when they returned to Canada for which they fought; and

WHEREAS Indigenous Veterans Day provides an opportunity for all Canadians to reflect upon the positive contributions Indigenous veterans have made to our nation's history and to express gratitude for their selfless service;

NOW, THEREFORE I, Mayor Kirk Cameron, do hereby proclaim November 8, 2025 to be Indigenous Veterans Day in the city of Whitehorse.

Kirk Cameron
Mayor

CITY OF WHITEHORSE
COMMUNITY SERVICES COMMITTEE
Council Chambers, City Hall



Chair: Paolo Gallina

Vice-Chair: Eileen Melnychuk

November 3, 2025

Meeting #2025-21

-
1. New Business

CITY OF WHITEHORSE
PUBLIC HEALTH AND SAFETY COMMITTEE
Council Chambers, City Hall



Chair: Dan Boyd

Vice-Chair: Paolo Gallina

November 3, 2025

Meeting #2025-21

-
1. Food for Fines Program
Presented by Elizabeth Beecroft, Manager, Bylaw Services
 2. New Business

ADMINISTRATIVE REPORT

TO:	Public Health and Safety Committee
FROM:	Administration
DATE:	November 3, 2025
RE:	Food for Fines Program

ISSUE

Approval of the annual 'Food for Fines' Program.

HISTORY

In the spirit of contributing to those citizens who are less fortunate during the holiday season, Bylaw Services is requesting approval to continue its annual 'Food for Fines' initiative this year. The 'Food for Fines' program has been supported by the City every year, since 2005.

Last year from November 26th to December 10th, the 'Food for Fines' Program provided for non-perishable food and cash donations to be accepted as payment for 'time expired' parking meter or 'exceed two-hour time limit' violation tickets with proceeds donated to the Whitehorse Food Bank, Kaushee's Place, and Skookum Jim Friendship Centre. In 2024, \$9,915 was raised in cash and \$2,085 was collected in food donations for a total value of \$12,000.

In addition to the food items, cash donations received go towards the purchase of additional non-perishable food. The local charities proposed to receive the donations are:

1. **Whitehorse Food Bank** is open five days a week and provides services to numerous families throughout Whitehorse providing food hampers to approximately 2,000 people a month; and
2. **Kaushee's Place** is a transition home for women and gender diverse people, and their children, experiencing violence. It is free of charge.

ALTERNATIVES

1. Approve a grant of specific parking fines to the Food Bank and Kaushee's Place in an amount not exceeding \$12,000 for the 'Food for Fines' program; or
2. Do not implement the 'Food for Fines' program.

ANALYSIS

The following chart outlines the revenue potentially generated by expired parking meter tickets:

Number of tickets issued per week	Ranges between 320 to 480
Revenue @ \$20/\$40 ticket for two weeks	\$6,400 / \$19,200

Historically, the Food for Fines program was a one-week initiative. To better serve the community, in 2024 an additional week was added. During the two-week Food for Fines initiative, people have the option of donating non-perishable food items in lieu of regular

‘expired parking meter’ or ‘two-hour zone’ fine payments. Food items contributed must be of the same or higher value than the ticket. If such a food contribution is made, the ticket would then be considered “Paid in Full.”

Planned promotional support and advertising by the City during the month of November is available, if this initiative is approved. Promoting and advertising this initiative is seen as the best way to obtain full participation from the public.

Food items may be dropped off at City Hall, along with the ticket, so that financial elements of the program can be determined. A small media event consisting of a ‘cheque presentation’ is also planned for after the program closes in order that the total dollar value collected can be communicated to our city’s residents.

Only “Parking Meter” and “Two-Hour Zone” tickets issued on and between November 22nd and December 6th, 2025 are eligible for this initiative. The cut off date for drop-off/payment of food items would be close of business on Wednesday, December 10th, 2025, with anticipated media presentation on Friday, December 12th. This would permit sufficient time for Bylaw Services to ensure delivery of the donated food to the proposed local charities and for these organizations to then distribute the food items to those families in need prior to Christmas.

ADMINISTRATIVE RECOMMENDATION

THAT the 2025 Food for Fines program be approved; and

THAT a grant not exceeding \$12,000 for parking meter tickets or two-hour zone fines issued between November 22 and December 6, 2025 be approved to the Food Bank and Kaushee’s Place as part of the ‘Food for Fines’ program.

CITY OF WHITEHORSE
CORPORATE SERVICES COMMITTEE
Council Chambers, City Hall



Chair: Eileen Melnychuk

Vice-Chair: Anne Middler

November 3, 2025

Meeting #2025-21

-
1. Upcoming Procurements (November/December) – For Information Only
Presented by Svetlana Erickson, Manager, Financial Services
 2. New Business

ADMINISTRATIVE REPORT

TO:	Corporate Services Committee
FROM:	Administration
DATE:	November 3, 2025
RE:	Upcoming Procurements (November/December) – For Information Only

ISSUE

Bi-monthly update on forthcoming procurement projects with an anticipated value greater than \$100,000.

REFERENCE

- [Procurement Policy 2020-03](#)
- Upcoming Procurement Projects Information Report (Attachment 1)

HISTORY

In accordance with the Procurement Policy, a list of forthcoming procurements with an anticipated value greater than \$100,000 must be provided to Council on a bi-monthly basis.

ANALYSIS

Managers have been asked to review their capital projects and operating requirements and to provide information on their anticipated procurements over \$100,000 for the period of November and December 2025. The information as compiled by the Financial Services department is attached as Attachment 1.

Attachment 1
Upcoming Procurement Projects Information Report

Report Number 2025-06

Date of Meeting: November 3, 2025

Subject: Upcoming Procurement Projects

Period: November - December 2025

Purpose: To provide Council with a bi-monthly update on forthcoming procurement projects with an anticipated value greater than \$100,000. All forthcoming procurements are subject to budget and/or rebudget authorization.

No	Department	Project Title	Brief Description	Budget (Operating / Capital)	Commencement Report Required (No/Yes + reason)	Anticipated Procurement Posting Date
1	Engineering Services	2026 Asphalt Overlay Detailed Design and Construction Contract Administration (CCA)	Detailed design and construction contract administration for the 2026 asphalt overlay program	Capital 240c00410	No	November 12, 2025
2	Engineering Services	Forcemain External Corrossion Direct Assessment and Cathodic Protection	External Corrosion Direct Assessment (ECDA) of a Cathodic Protection (CP) system for two critical sanitary forcemains-Forcemain #1 and Forcemain #2	Capital 240c00320	No	November 12, 2025
3	Engineering Services	Robert Service Way Slope Stabilization - Detailed Design	Engineering services to complete detailed design for the Robert Service Way escarpment slope stabilization project	Capital 240c00924	Yes, the value of the project is over \$500k	December 15, 2025
4	Engineering Services	Downtown Sanitary Trunk Main Rehabilitation - Detailed Design	Engineering services for the detailed design of the Downtown Sanitary Trunk Main Rehabilitation project	Capital 240c02024	No	November 24, 2025
5	Property Management	Engineering Services - Fire Hall #3	Soil investigation and geotechnical engineering services for new Fire Hall #3 (Whitehorse North) design purposes	Capital 360c01022	No	November 10, 2025

CITY OF WHITEHORSE
CITY PLANNING COMMITTEE
Council Chambers, City Hall



Chair: Anne Middler

Vice-Chair: Jenny Hamilton

November 3, 2025

Meeting #2025-21

1. New Business

CITY OF WHITEHORSE
DEVELOPMENT SERVICES COMMITTEE
Council Chambers, City Hall



Chair: Jenny Hamilton

Vice-Chair: Lenore Morris

November 3, 2025

Meeting #2025-21

-
1. New Business

CITY OF WHITEHORSE
CITY OPERATIONS COMMITTEE
Council Chambers, City Hall



Chair: Lenore Morris

Vice-Chair: Dan Boyd

November 3, 2025

Meeting #2025-21

-
1. Snow and Ice Control Policy Update
Presented by Richard Graham, Manager,
Fleet and Transportation Maintenance
 2. New Business

ADMINISTRATIVE REPORT

TO:	City Operations Committee
FROM:	Administration
DATE:	November 3, 2025
RE:	Snow and Ice Control Policy Update

ISSUE

An amendment is required to update the City's Snow and Ice Control Policy which designates the City's winter maintenance priorities and service levels.

REFERENCE

- [Snow and Ice Control Policy 2022-01](#)
- Snow and Ice Control Policy Proposed Amendments (Attachment 1)

HISTORY

The Snow and Ice Control Policy identifies the City's winter maintenance operations and establishes the priorities and service levels for snow and ice control activities. The policy was last updated in October of 2023.

ALTERNATIVES

1. Approve amendments to the Snow and Ice Control Policy; or
2. Refer the matter back to Administration for further analysis.

ANALYSIS

As a result of the completion of key capital and development projects as well as changes to the approved O&M budget, an amendment to the priorities, and services levels as defined in the Snow and Ice Control Policy is required. Changes being proposed are highlighted with red bubbles in attached maps, and, include:

- Add various hill sections of roads in Crestview, Hillcrest, Granger and Porter Creek as priority 1 for ice control;
- Add new roads completed in Whistle Bend Phases 7 and 9, Copper Ridge, McIntyre, and Kulan;
- Add roads completed previously in Hidden Valley and one lane in Whistle Bend Phase 3;
- Removal of roads undeveloped or still under construction in Whistle Bend Phase 3, 12, and 13 and the green street west;
- Reflect the adjustment of Porter Creek west residential side streets from priority 2 to priority 3;
- Reflect the adjustment of a loop in Whistle Bend from Casca to Marathon to Witch Hazel to Wyvern to Leota to Casca from a priority 3 to a priority 2;
- Renumbering of current and former snow storage sites to ensure consistent numbering across all documentation;
- Add Hillcrest to Elijah Smith Elementary to Hamilton paved trail as a priority 1;

- Add Hamilton Boulevard (Alaska Highway to North Star Drive) paved trail as a priority 1 for as a pilot project from the fall of 2025 to the spring of 2027;

ADMINISTRATIVE RECOMMENDATION

THAT Council approve amendments, as proposed, to the Snow and Ice Control Policy.

CITY OF WHITEHORSE

COUNCIL POLICY



Attachment 1

SNOW AND ICE CONTROL POLICY

Policy Number:	2022-01
Approved by:	Council Resolution <u>2022-23-08</u> Dated October 24, 2022
Revised by:	
Effective date:	October 24, 2022
Department:	Fleet and Transportation Maintenance

PURPOSE

1. The Snow and Ice Control Policy is necessary to make a clear statement of the intent of the City of Whitehorse's winter maintenance operations, to establish priorities and service levels and to manage budgetary constraints. An effective and efficient Snow and Ice Control program is vital to allowing the City to function under normal winter weather conditions to reduce snow and ice hazards and to provide reasonable winter mobility on City infrastructure including roadways, active transportation networks, lanes and parking lots.

OBJECTIVES

2. The objectives of the City's Snow and Ice Control Policy are to:
 - (1) Allow safe and equitable access to winter Transportation Routes including roadways, Sidewalks and active Transportation Routes;
 - (2) Provide for the operation and safe access of vehicles providing Fire, Police, Emergency Medical Services and Transit;
 - (3) Prevent or reduce collisions, slips, falls and injury to people due to winter conditions;
 - (4) Balance the limited resources of the City and the competing interests of City residents and other stakeholders.

This policy covers most winter maintenance scenarios. When unusual conditions or extreme weather events occur, including, without limitation, above average snow fall or extreme winter storms, the Manager of Fleet and Transportation Maintenance or designate shall use their discretion and judgement in the application of this policy to achieve the desired level of service as resources permit. This may include temporary deviation from the established priorities and service standards, or other decisions which may result in temporary inconsistencies with this policy. Council expressly authorizes such deviations as long as the Manager of Fleet and Transportation Maintenance continues to be guided by, and exercises discretion, in accordance with the objectives set out in this policy.

This policy is intended to assist transportation network users that are properly equipped for winter conditions, operating vehicles and other equipment in a manner consistent with effective winter driving habits and with due care and attention to conditions. This policy will be reviewed periodically to ensure that the priorities, service levels and support systems continue to meet the purpose of this policy, the competing interests of the City's residents and other stakeholders are balanced effectively, and to ensure adequate resources and reserves are both in place and available for winter maintenance operations.

DEFINITIONS

3. In this policy,

"CENTRAL BUSINESS DISTRICT" means the downtown core bordered by Front Street, Elliot Street, Fifth Avenue and Wood Street, as illustrated in Appendix A.

"COMPACTED SNOW SURFACE" means that snow will be allowed to accumulate and be packed by traffic or levelled by snow ploughs.

"DE-ICER" means the chemical agent that the City uses to mix with sand to control ice, usually sodium chloride.

"DRAINAGE PROBLEM" means problems caused by accumulated or running snow melt water.

"FEES AND CHARGES BYLAW" means the City's *Fees and Charges Bylaw* as amended or replaced from time to time.

"ICE CONTROL" means control of the build-up of packed snow or ice through the use of equipment, Sanding and De-Icer.

"MANAGER OF FLEET AND TRANSPORTATION MAINTENANCE" means the Manager of the Fleet and Transportation Maintenance Department or their approved designate.

"OPENED" means the ploughing of snow from the driving lanes to the side.

"ROAD" means a road as identified in Appendix A. For greater certainty, Roads do not include Low volume roads or "end roads" that were not designed and constructed to the applicable Engineering Standards of the time and such roads are not subject to this Policy.

"SANDING" means the application, either manually or by mechanical spreaders, of De-Icer treated sand to improve traction.

"SIDEWALK" means the hard surface designed and constructed for and normally used by pedestrians, excluding multi-use paths.

"SNOW AND ICE CONTROL" means all operations associated with Snow Ploughing, Snow Loading and Hauling, and Ice Control.

"SNOW STORAGE SITE" means a pre-approved location for the dumping and storage of hauled snow.

“SNOW LOADING AND HAULING” means the removal of snow from City Roads, parking lots, lanes and Sidewalks by loading the snow from windrows onto trucks and hauling the snow to Snow Storage Sites.

“SNOW PLOUGHING” means the ploughing of snow into windrows in storage areas on City roads, lanes, Sidewalks and paved trails. Storage areas can be, among other things, on centre medians, boulevards, adjacent to the curb or Sidewalk and at the edge of back lanes or City owned parking lots.

“TRANSPORTATION ROUTE” means a Road, Sidewalk or paved trail as identified in Appendix A or C.

RESPONSIBILITIES

4. City Council shall set and adopt:
 - (1) The snow removal budget;
 - (2) The levels of service under this policy; and
 - (3) The priority 1 and 2 street, trail and sidewalk maps and all prioritization of services under this Policy.
5. The Manager of Fleet and Transportation Maintenance shall oversee the implementation of the Snow and Ice Control Policy by:
 - (1) Determining when and how to initiate and perform snow and Ice Control operations in accordance with this policy;
 - (2) Allocating and scheduling Department of Fleet and Transportation Maintenance resources in accordance with the priorities established by Council under this policy;
 - (3) Coordinating and allocating resources with other City departments as needed to perform snow and ice control operations in accordance with this policy;
 - (4) Obtaining, allocating and scheduling privately held resources;
 - (5) Addressing public concerns in respect of Snow and Ice Control;
 - (6) Managing the Department of Fleet and Transportation Maintenance’s budget; and
 - (7) Recommending revisions to this policy to Council on an as needed basis.
6. Department of Fleet and Transportation Maintenance employees shall operate City owned equipment in their Snow and Ice Control duties in accordance with this policy and the instructions of the Manager of Fleet and Transportation Maintenance.

TRANSPORTATION ROUTE PRIORITY AND STANDARDS

7. The City operates with a limited amount of funds which are required for a number of purposes and projects. In establishing the Snow and Ice Control Policy, the City must take into consideration its limited financial resources, equipment and personnel. Priorities and standards are established to provide the greatest benefit to the majority of the travelling public. This involves balancing the City’s

limited resources with the competing interests of City residents and other stakeholders. How, when and where the City undertakes Snow and Ice Control depends on the City Council approved priority system, as detailed in this policy, as well as other factors which may include, without limitation:

- (1) Temperatures before, during, and after a winter storm;
 - (2) Duration of the storm;
 - (3) Amount of accumulated snow;
 - (4) Temperature of the Road surface;
 - (5) Wind speed and direction; and
 - (6) The weather forecast for the days following the storm.
8. City Council has set three priority ratings for Routes with consideration given to, among other things, traffic volume, terrain, transit, emergency services, drift exposure, Drainage Problems, Road classification, Road geometrics, the City of Whitehorse Servicing Standards Manual, and the requirement for City staff to respond to changing needs within the community. The standard of service for Snow and Ice Control is to be completed in accordance with this policy and approved budgets. The priority ratings and standards of service are described as follows:

Priority	Description	Standard
1	<ul style="list-style-type: none"> • Freeways and major arterial Roads • Emergency routes • Major transit routes • Roads with steep grades • Areas with known Drainage Problems during spring melt • Designated paved trails 	<ul style="list-style-type: none"> • Routes Opened in 24 hours • Routes ploughed to the shoulder in 72 hours • Ice Control operations in 24 hours
2	<ul style="list-style-type: none"> • Arterial Roads • Transit routes • Major industrial Roads • Central Business District Roads • Roads adjacent to schools • Access to prioritized City facilities • Prioritized City-owned parking lots • Emergency routes within priority 2 zones • Designated paved trails 	<ul style="list-style-type: none"> • Routes Opened in 48 hours • Routes ploughed to the shoulder in 72 hours • Ice Control operations in 48 hours
3	<ul style="list-style-type: none"> • Remainder of City Roads (excluding 'low volume') • City owned parking lots and lanes • Designated paved trails 	<ul style="list-style-type: none"> • Roads Opened, ploughed and Ice Control performed after higher priority Transportation Routes

SNOW PLOUGHING OF ROADS, CITY-OWNED PARKING LOTS AND LANES

9. Snow Ploughing and Sanding operations will commence in priority order in accordance with this policy during a snow event forecast to include snow accumulation, and in consideration of, among other things, field conditions and the weather forecast. When heavy snowfalls are continuous, or follow closely one after the other, operations will be repeated or continued on the highest priority until completed before moving on to the next highest priority.
10. Priority 1 Roads will be ploughed to remove snow as close to the Road surface as possible.
11. Priority 2 Roads will be ploughed to remove snow, but snow of varying depths may be left on the Road in accordance with what is required to minimize driving difficulty.
12. Snow Ploughing of priority 3 Roads, laneways and parking lots will be completed after all other priority Roads are ploughed, and will only be completed as required to ensure that they are passable. Priority 3 Roads will be bladed flat and maintained as a Compacted Snow Surface.
13. Snow Ploughing may result in windrows on both sides of the Road or to the centre of the Road. The clearing of windrows in front of driveways left by Snow Ploughing equipment shall be the responsibility of the property owner or other affected individual, company or party.
14. The City will clear windrows from the front of driveways for occupants who have applied and been approved for the senior citizens or persons with disabilities windrow removal service (Appendix E). Windrows will be cleared after Snow Ploughing operations are complete in order of Road priority listed in this policy. The City will be responsible for clearing windrows from pedestrian crossings in the Central Business District.
15. The clearing of windrows where they cross City maintained Sidewalks and maintained paved trails shall be the responsibility of the City and will be cleared in accordance with this policy.
16. The clearing of snow between the edge of the street and all public fire hydrants is the responsibility of the City. The work shall be completed when the snow depth exceeds 60 cm or when the hydrant is obstructed from clear view. Residents shall not pile driveway or Sidewalk snow around fire hydrants. Property owners are required to clear snow around any private hydrants when the snow depth exceeds 60 cm or when the hydrant is obstructed from clear view.

SNOW LOADING AND HAULING FROM ROADS, CITY-OWNED PARKING LOTS AND LANES

17. Snow Loading and Hauling operations on Roads will be initiated in priority order.
18. When school is in session, the City will avoid Snow Loading and Hauling operations in school zones to the extent possible between the hours of 0800 to 0900, 1130 to 1300 and 1500 to 1630.

19. Snow clearing and Snow Loading and Hauling operations will take place on priority 1 and priority 2 Roads and priority parking lots, including those located in residential areas, at any time, 24 hours per day, seven days per week. Disruption in residential areas will be reduced where possible between the hours of 2300 and 0700.

ICE CONTROL FOR ROADS, CITY OWNED PARKING LOTS AND LANES

20. Following Snow Ploughing the City will provide Ice Control on Roads, City parking lots and lanes in accordance with the priorities described for Snow Ploughing, and more specifically in accordance with the following sub-priorities:
 - (1) Intersections with traffic signals,
 - (2) Roads with steep grades,
 - (3) Intersections, bridges and corners on Priority 1 roadways,
 - (4) Intersections and corners on Priority 2 Roads,
 - (5) Intersections and corners within priority City-owned parking lots,
 - (6) Intersections and corners on Priority 3 Roads,
 - (7) Parking lots and lanes as required providing for Ice Control, and
 - (8) As required in emergency situations.
21. Ice Control will not normally be undertaken outside of areas listed in line 20.
22. De-Icer or sand with a high concentration of De-Icer shall usually be used only in emergency situations.

DESIGNATED PAVED TRAILS

23. The City will provide Snow Ploughing operations on priority 1, 2, and 3 multi-use paved trails as illustrated in Appendix C and described in this policy.
24. The City may provide either Snow Ploughing and Sanding or a packed-snow surface on other multi-use paved trails if provided for in the approved annual operating and maintenance budget.

SIDEWALKS AND TRANSIT STOPS

25. The City will provide Snow Loading and Hauling from sidewalks adjacent to City property as illustrated in Appendix C, as required by the City's Maintenance Bylaw.
26. The City will provide Ice Control on sidewalks adjacent to City property as illustrated in Appendix C, as required by the City's Maintenance Bylaw.
27. The City will provide Ice Control at Transit stops as illustrated in Appendix C, as required to provide for safe pedestrian travel.

HOURS OF OPERATION AND STAFF DEPLOYMENT

28. The City will provide Snow Ploughing, Snow Loading, and Snow Hauling operations within the geographical boundaries of the City of Whitehorse, excluding the Alaska Highway, the Klondike Highway and private developments.

29. When abnormal winter weather or Road conditions exist as caused by severe or repetitive storms or emergency situations, overtime, additional City equipment and outside forces and equipment may be mobilized at the discretion of the Manager of Fleet and Transportation Maintenance.
30. Except for emergency situations, as determined by the Manager of Fleet and Transportation Maintenance, Snow and Ice Control operations will be suspended where the daily high temperature is lower than minus 35 degrees Celsius (-35°C).

PARKING BANS

31. Parking bans may be implemented as required to provide for Snow and Ice Control operations. Notification will be provided to area residents at least 24 hours prior to a parking ban, except in the case of an emergency. Vehicles that do not adhere to the parking ban shall be towed, and the owner of the vehicle shall be responsible for all towing costs.

COMMUNICATION

32. All concerns and inquiries shall be handed by the Fleet and Transportation Maintenance Department Administrative Assistant at the Snow Line 633-7669, Monday to Friday, 0800 to 1600. At all other times, emergency concerns and inquiries shall be directed to the After Hours Trouble Line at 667-2111.
33. Maintenance activities or information may be advertised in local newspapers, daily radio reports, social media and may be included in the Fleet and Transportation Department pages on the City website (www.whitehorse.ca).

SNOW STORAGE SITES

34. No person, other than an employee of the City's Fleet and Transportation Maintenance Department or a person contracted by the City for snow removal, engaged in ordinary duties, shall use a snow storage site without first obtaining a permit from the Fleet and Transportation Department.
35. The fee for a permit will be as listed in the City's Fees and Charges Bylaw and will be valid for the current winter season.
36. The Manager of Fleet and Transportation Maintenance may restrict the use of certain snow storage sites and may make rules governing the disposal of snow in snow storage sites.
37. The Manager of Fleet and Transportation Maintenance reserves the right to limit, amend or cancel any permit at any time and for any reason, in their sole discretion.

APPENDICES

38. Appendices "A", "B", and "C" shall be reviewed by the Manager of Fleet and Transportation Maintenance on an annual basis and adopted by Council if there are any changes. Revisions for priority streets and snow storage sites will be included in both text and maps; only maps will be revised with respect to Sidewalk clearing and transit stops.

- 39. Appendix "A", Priority Transportation Roads
- 40. Appendix "B", Snow Storage Sites
- 41. Appendix "C", Sidewalks, Transit Stops and Trails
- 42. Appendix "D", Snow Dump Permit Application
- 43. Appendix "E", Senior/Disabled Windrow Removal Application

REPEAL OF EXISTING POLICY

- 44. The Snow and Ice Control Policy adopted by Council resolution 2021-18-06, including all amendments thereto, is hereby repealed.

FORCE AND EFFECT

- 45. This policy shall come into full force and effect upon adoption by Council.

HISTORY OF AMENDMENTS

Date of Council Decision	Reference (Resolution #)	Description
October 23, 2023	2023-19-03	Appendix A - Move Chilkooot Way from priority 2 to priority 1. Appendix B - Delete Whistle Bend Snow Dump. Miscellaneous Amendments to Maps

APPENDIX “A” TEXT – SNOW CLEARING PRIORITY ROADS

PRIORITY 1

Thoroughfares:	Hamilton Boulevard, Landfill Road, Lobird Road, Mountainview Drive, Robert Service Way, Two Mile Hill, Whistle Bend Way
Crestview:	Azure Road between Alaska Highway and Klukshu Avenue, Kathleen Road
Downtown:	2nd Avenue, 4th Avenue, Black Street between Front and 2nd, Ogilvie Street between 2nd and 4th
Marwell:	Quartz Road, Copper Road, Chilkoot Way
Porter Creek:	12 th Avenue, Centennial Street, Clyde Wann Road, Hickory Street
Riverdale:	Alsek Road, Hospital Road, Lewes Boulevard, Nisutlin Drive to Alsek Road
Takhini:	Range Road, University Drive
Whistle Bend:	Casca Boulevard

Priority 1 for Ice Control Only (otherwise, Priority 2):

Thoroughfares:	Fish Lake Road to City Limits, Wickstrom Road from Hospital Road to the City lagoons
Copper Ridge:	Hill sections of Stope Way and Keewenaw Drive
Crestview:	Crag Road, Dezadeash Road, Kusawa Road, Minto Road, Rainbow Road and Crestview Lagoon access road
Granger:	Hill sections of Wilson Drive and Turner Crescent
Hillcrest:	Hill sections of Hillcrest Drive, Dalton Trail, Sunset Drive South, Kluane Crescent, Chalet Crescent and Roundel Road.
Ingram:	Hill section of Mallard Way from Hamilton Boulevard to Goldeneye Street Street
Kulan:	Highway access portion of Laberge Road
Mary Lake:	Fireweed Drive between Alaska Highway and Fireweed Drive loop
McLean Lake:	Lobird road
Porter Creek:	Hill sections of 11th Avenue, Almond Crescent, Fir Street, Grove Street, Ponderosa Drive and Walnut Crescent
Raven's Ridge:	Hill section of War Eagle Way
Riverdale:	Hill sections of Bell Crescent, Boswell Crescent, Takhini Avenue, Teslin Road
Whitehorse Copper:	Hill sections of Moraine Drive, Esker Drive and Ski Hill Road from the Alaska Highway to Collins Lane.

PRIORITY 2

Arkell:	Heron Drive
Canyon Crescent:	from Alaska Highway to Canyon Crescent loop
Copper Ridge:	Emerald Trail, Falcon Drive, Lazulite Drive, North Star Drive
Cowley Creek:	Dolly Varden Drive, Salmon Trail
Crestview:	Klukshu Road; Squanga Road, Rainbow Road
Downtown:	3 rd Avenue, 5 th Avenue between Main and Ogilvie, 6 th Avenue between Lambert and Ogilvie, 7 th Avenue between Ogilvie and Baxter, Alexander Street from 4 th to 6 th , Baxter Street, Black Street from Front to 6 th , Central Business District roads, Front Street between Lambert and Black, Hanson Street from 2 nd to 6 th , Hawkins Street from 2 nd to 4 th , Hoge Street from 3 rd to 4 th , Jarvis Street from Front to 6 th , Lambert Street, Lowe Street from 2 nd to 3 rd , Ogilvie Street from Front to 2 nd , Ray Street, Rogers Street from 2 nd to 3 rd
Fox Haven:	Alusru Way
Granger:	Thompson Road
Hidden Valley:	Couch Road
Hillcrest:	Burns Road, Hillcrest Drive, Park Lane, Roundel Road, Sunset Drive North
Ingram:	Mallard Way
Kulan:	Laberge Road, Bennett Road, Lindeman Road
Logan:	Falcon Drive
McIntyre:	McIntyre Drive
Mclean Lake:	Bottom portion of Mclean Lake Road
MacRae:	Denver Road, Fraser Road, Lorne Road
MacPherson:	MacPherson Road and Marion Crescent
Mary Lake:	Fireweed Drive
Marwell:	Portion of Gypsum Road, Industrial Road, portion of Silver Road, Tlingit Road, Tungsten Road
Pineridge:	Castle Drive, Harvey Road, portion of Logan Road, Nansen Drive
Porter Creek:	11 th Avenue between Fir and Pine, 13 th Avenue, 14 th Avenue, 15 th Avenue and 17 th Avenue East of the Alaska Highway, Pine Street south of 12 th , Ponderosa Drive, Grove Street, Fir Street between 11 th and 14 th , Holly Street, Sycamore Street, Beech Street, Redwood Street, Basswood Street and Cedar Crescent (By Holy Family School only), Larch Road, MacDonald Road.

.../continued

PRIORITY 2 (con't)

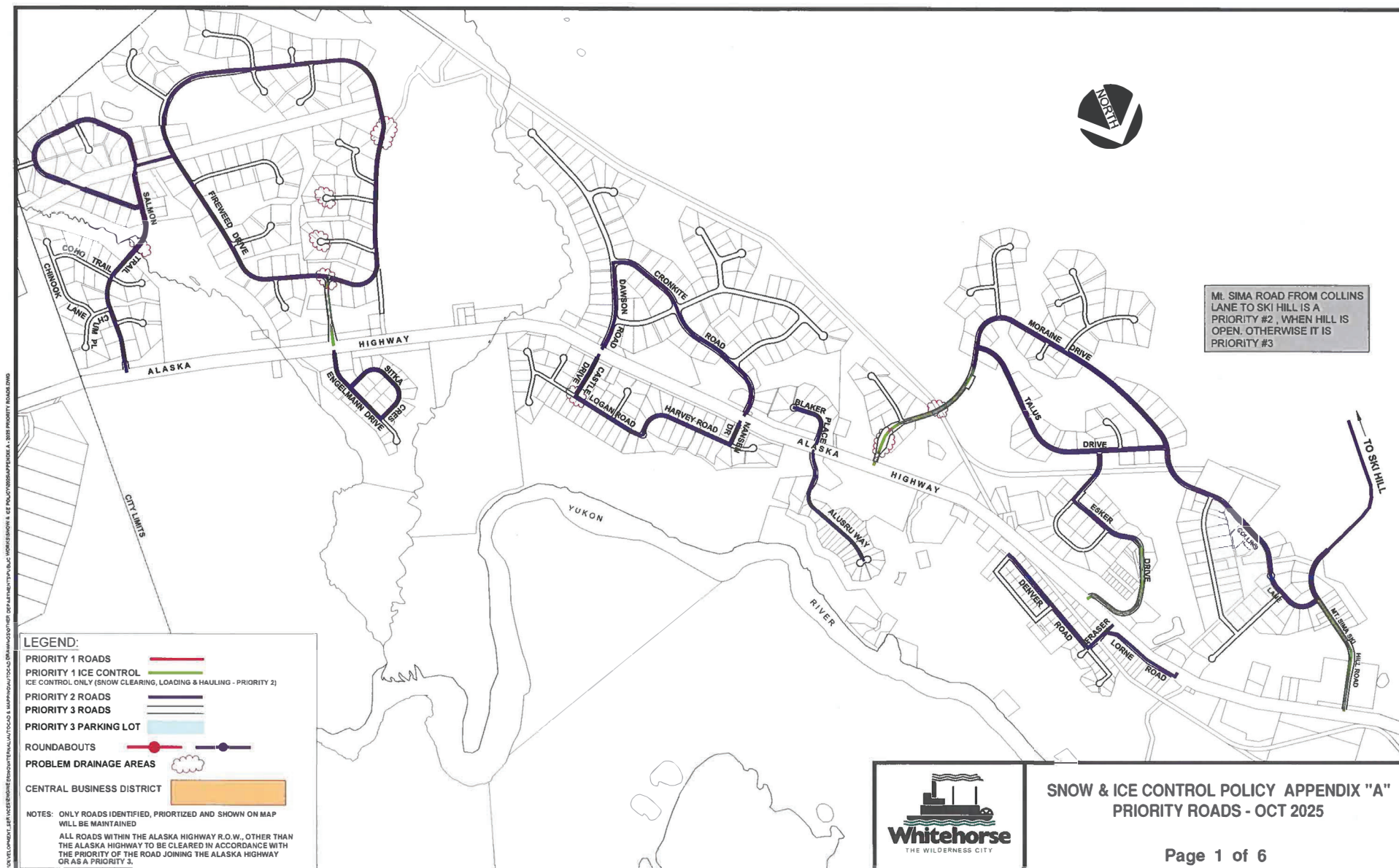
Range Point:	Range Road from Mountainview drive North, River Ridge Lane
Raven's Ridge:	War Eagle Way
Riverdale:	Duke Street, Klondike Road, Selkirk Street between Nisutlin and Selkirk Elementary
Spruce Hill:	Engelmann Drive to Sitka Crescent, Sitka Crescent
Takhini:	Normandy Road North, Rhine Way
Valleyview:	Sumanik Drive
Whistle Bend:	Keno Way between Casca Boulevard and Casca Boulevard, portion of Olive May Way from Casca Boulevard to Keno Way, Marathon Way between Casca Boulevard and Witch Hazel Drive, Witch Hazel Drive from Marathon Way to Wyvern Avenue, Wyvern Avenue between Witch Hazel Drive and Leota Street, Leota Street from Casca Boulevard to Wyvern Avenue
Whitehorse Copper:	Collins Lane, Esker Drive, Moraine Drive, Talus Drive, Mt. Sima Road (when ski hill is in operation)
Wolf Creek:	Portion of Dawson Road, Cronkite Road
Wolf Creek North:	Blaker Place
Yukon Gardens:	Metropolit Way
Parking Lots:	Canada Games Centre, Takhini Arena, Mount McIntyre Recreation Centre, Main-Steele Parkade (behind Scotia Bank), Second and Steele Parkade (behind CIBC Bank), Public Safety Building

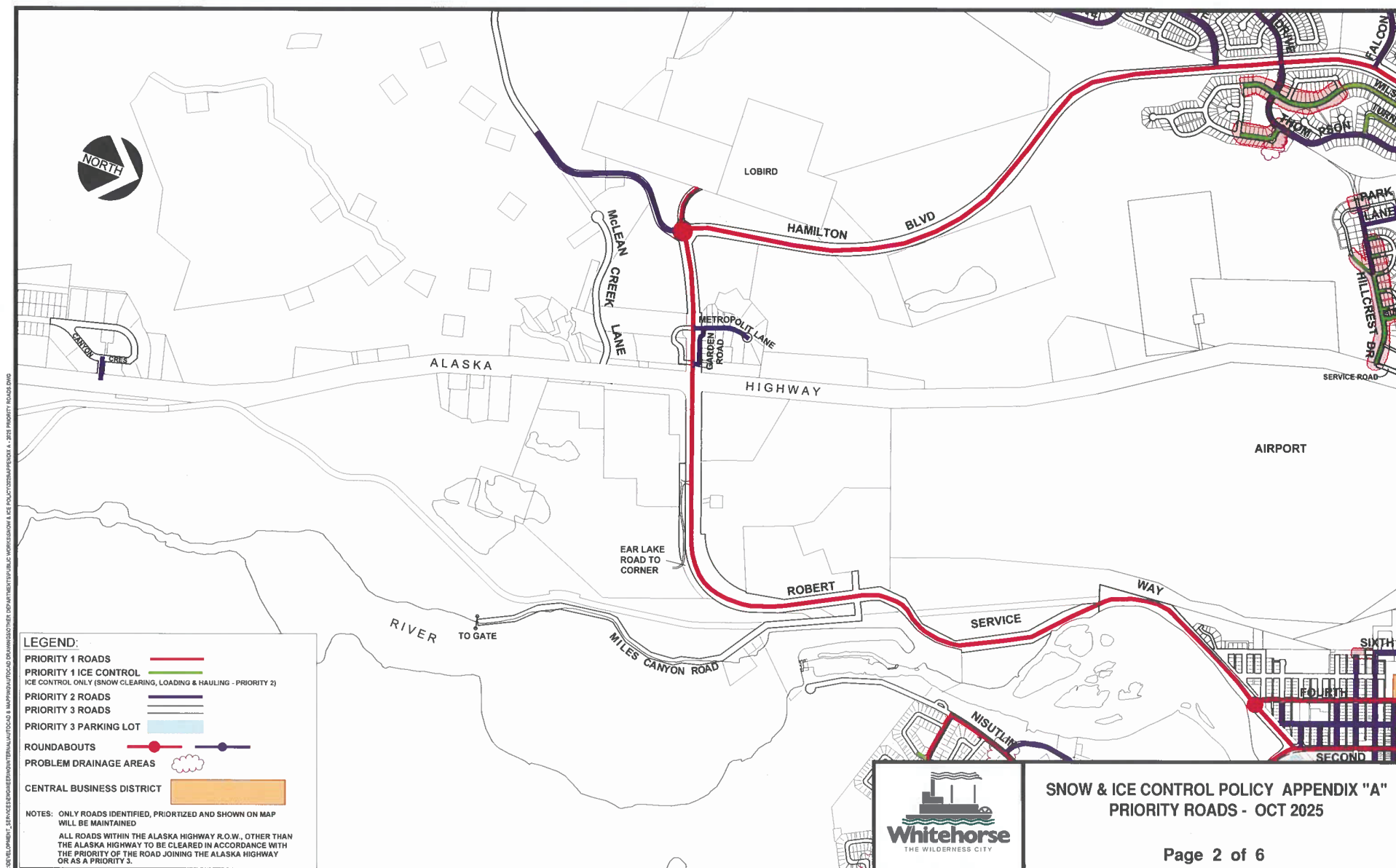
PRIORITY 3

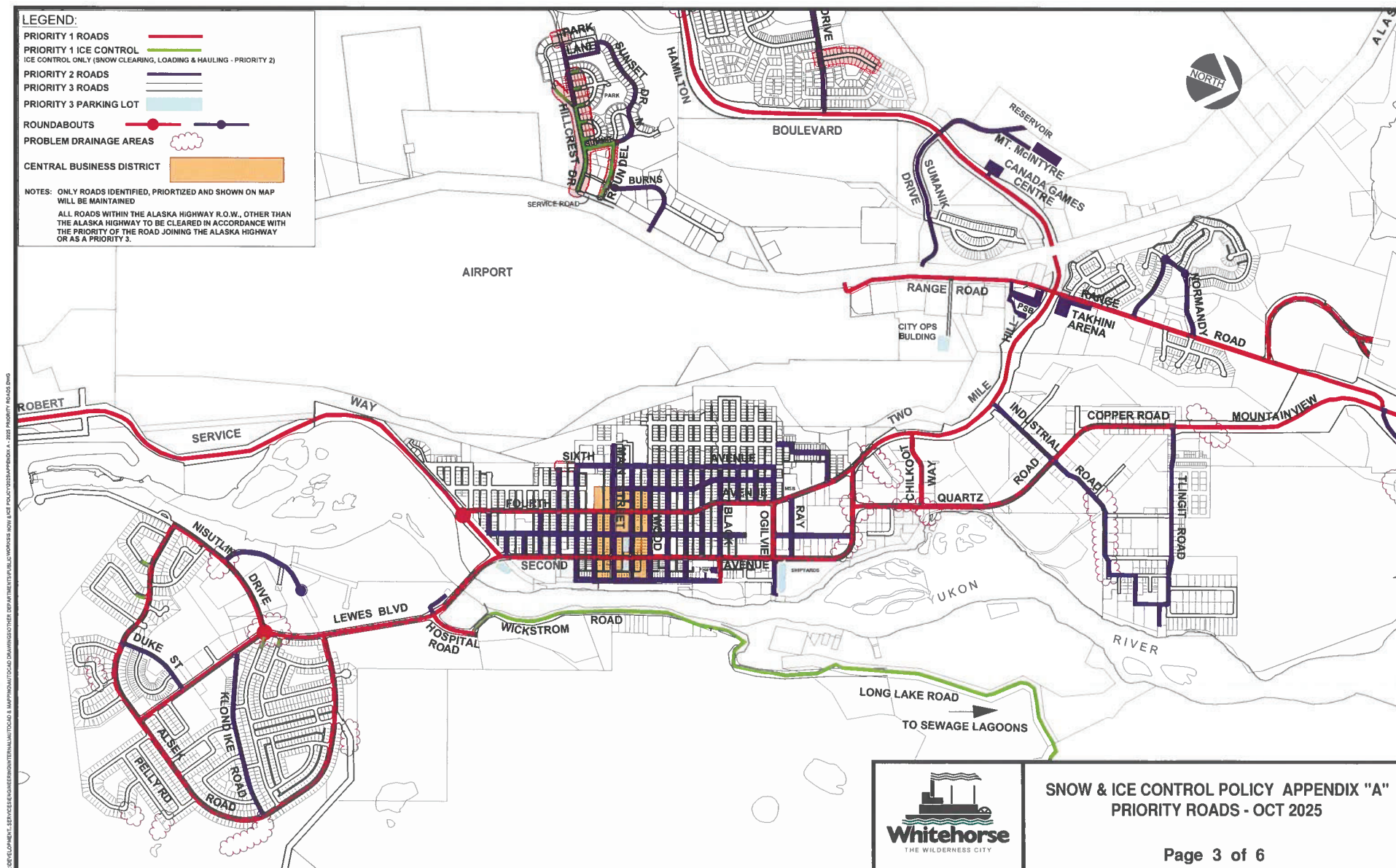
All remaining City owned Roads, Laneways and parking lots with the exception of "low volume or end" Roads.

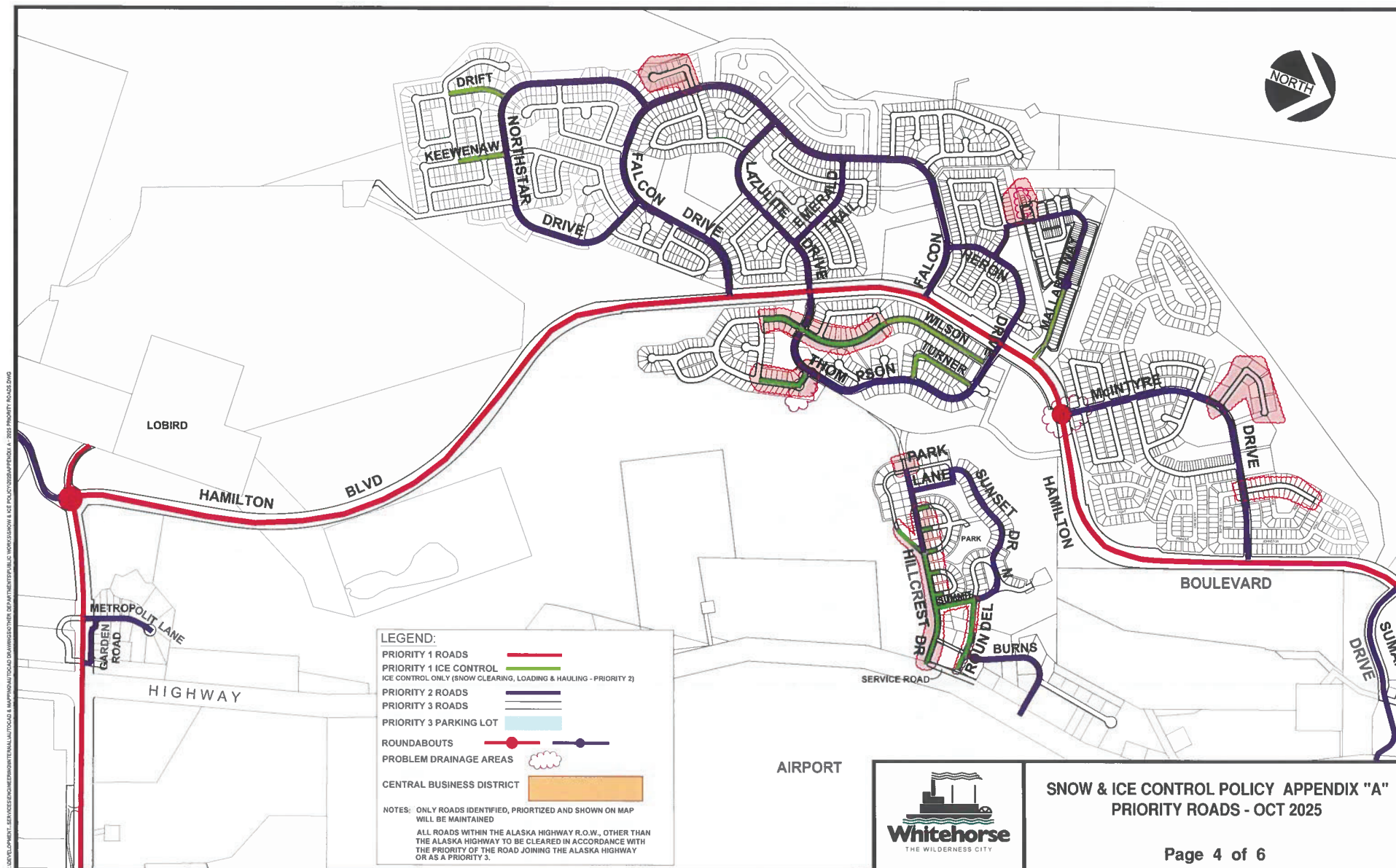
APPENDIX “B” TEXT – SNOW STORAGE SITES

1. Robert Service Way Across from Miles Canyon Road entrance, west and south
2. Grey Mountain Road Entrance to city reservoir access road
3. Roundel Sunset Drive/Summit Road
4. Pine Street Gully
5. Grove/Pine Easement between Grove and Pine Streets
67. Arkell/Logan Area North of Sandpiper Road on access road allowance
- 7.8 Kulan Industrial East of Chadburn Crescent
89. 20th Avenue Off Centennial Street in ravine
910. Two Mile Hill Old Two Mile Hill right-of-way
140. Copper Ridge Vacant Crown land off Falcon Drive near Aquamarine
11. No longer in use (Whistle Bend)
12. Hamilton Ext/Lobird Off Mclean Lake Road to Mclean Creek Lane

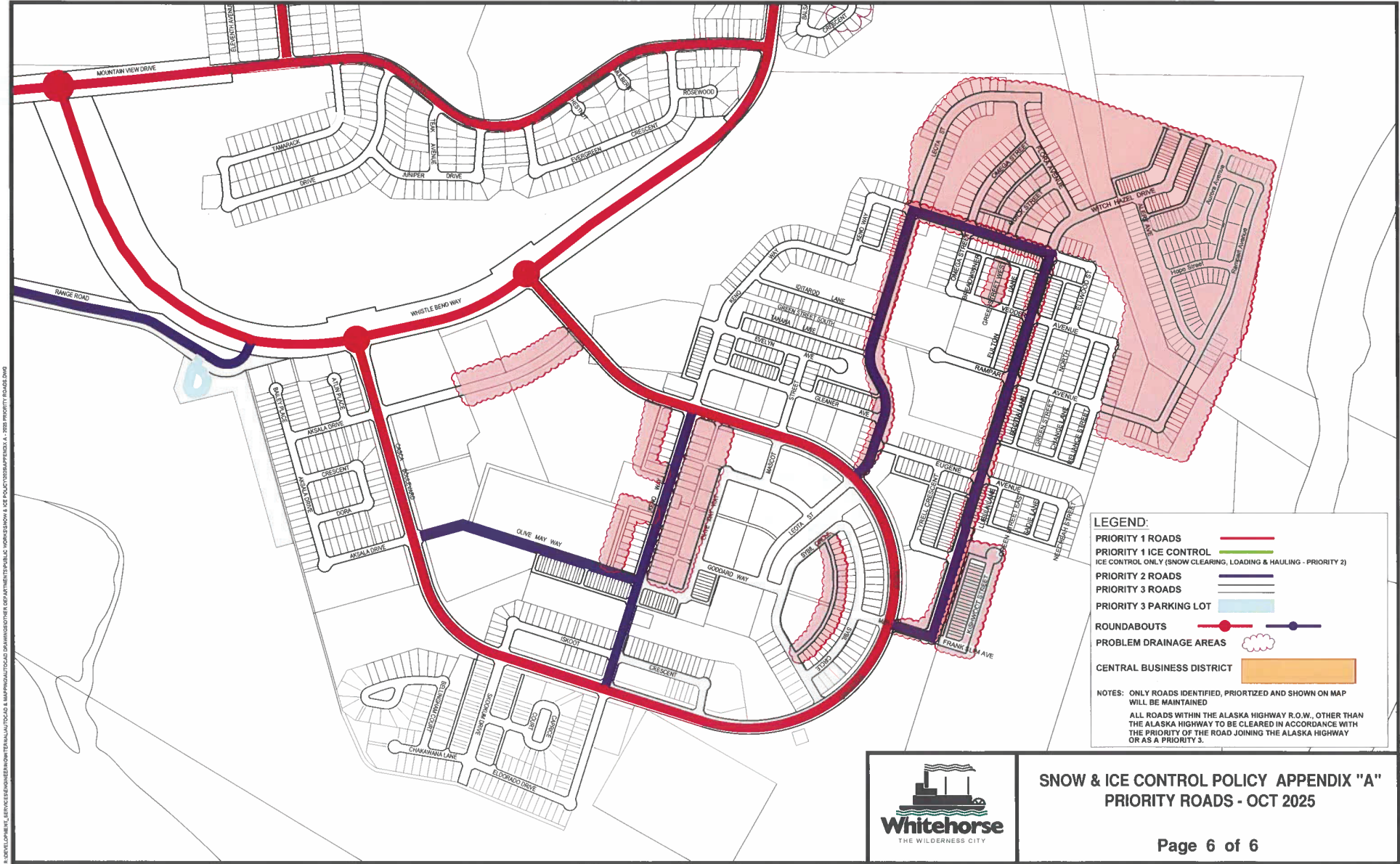








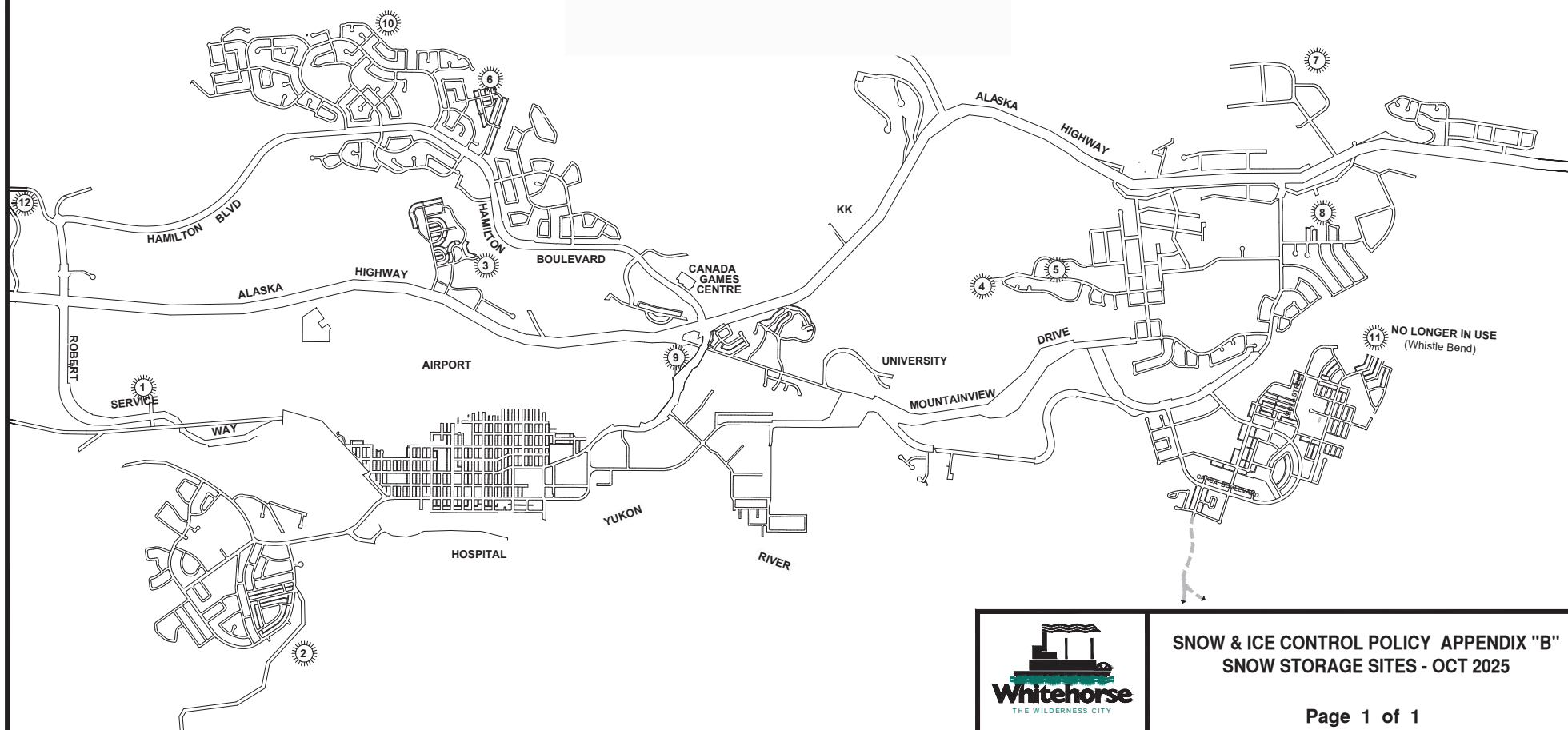




1. ROBERT SERVICE WAY
LOT 262, GROUP 804, PLAN 43886 CLSR,
ACROSS FROM MILES CANYON ROAD ENTRANCE,
WEST & SOUTH
2. GREY MOUNTAIN ROAD (CITY OWNED)
LOT 336, GROUP 804, PLAN 43442 CLSR.
(ENTRANCE TO CITY RESERVOIR ACCESS ROAD)
3. ROUNDEL DUMP - SUNSET DRIVE/SUMMIT ROAD
LOT 421, GROUP 804, PLAN 52105 CLSR
4. PINE STREET #1
LOT 437, GROUP 804, 52105 (GULLY)

5. EASEMENT BETWEEN GROVE & PINE STREETS
PINE STREET #2
6. LOGAN/ARKELL
LOT 241, REMAINDER AND BUFFER #2 (NORTH OF SANDPIPER
ROAD ON ACCESS ROAD ALLOWANCE AND GRAVEL PIT)
7. KULAN INDUSTRIAL AREA
LOT 1275, PLAN 63260 CLSR
8. SOUTH END 20th AVE (CITY OWNED)
LOT 406, GROUP 804, 51347, (OFF CENTENNIAL
STREET IN RAVINE)

9. OLD TWO MILE HILL R.O.W.
ROAD RIGHT-OF-WAY (OLD TWO MILE HILL)
10. COPPER RIDGE (OFF FALCON DRIVE, NEAR AQUAMARINE)
VACANT CROWN LAND
11. NO LONGER IN USE
12. HAMILTON BLVD EXTENSION (NEAR LOBIRD)
VACANT CROWN LAND (NEAR ROUNDABOUT)



SNOW & ICE CONTROL POLICY APPENDIX "B"
SNOW STORAGE SITES - OCT 2025



