

CITY OF WHITEHORSE **BYLAW 2026-25**

A bylaw to amend the Official Community Plan

WHEREAS Section 278 of the *Municipal Act* provides that a municipality shall by bylaw adopt an Official Community Plan in accordance with Part 7, Division 1 of the Act; and

WHEREAS Section 285 of the *Municipal Act* provides for amendment of an Official Community Plan, in accordance with the same approvals as established in Division 1 for the preparation and adoption of an Official Community Plan; and

WHEREAS it is deemed desirable and expedient to amend the 2040 Official Community Plan;

NOW THEREFORE the Council of the municipality of the City of Whitehorse, in open meeting assembled, hereby ENACTS AS FOLLOWS:

1. Section 15 of the Official Community Plan Adopting Bylaw 2022-40 is hereby amended by adding a new subsection and new policies 15.4.7 – 15.4.11 immediately after existing policy 15.4.6ii to read as follows:

“Mineral Exploration on Valid Mineral Tenure

The Whitehorse Copper Belt contains areas of Future Planning designation where valid mineral tenure exists. The following policies apply to Mineral Exploration on valid mineral tenure within the Future Planning designation.

- 15.4.7 Where valid mineral tenure exists in good standing within the Future Planning designation, Mineral Exploration activities including associated drill site preparation, clearings, and access may be considered a permitted temporary use where conducted in accordance with applicable territorial legislation, including the Quartz Mining Act and City bylaw, and utilizing Disturbed Areas, Established Access, and/or Temporary Equipment Access as defined in this Plan.
- 15.4.8 Where a valid authorization has been issued under the Quartz Mining Act for the Mineral Exploration activities described in policy 15.4.7, those activities shall be considered consistent with this policy for the purposes of Temporary Use Permit issuance.
- 15.4.9 Mineral Exploration activities authorized under this policy are administered through a Temporary Use Permit, which may be renewed annually, in accordance with the Zoning Bylaw. The development officer may impose conditions addressing land use matters in alignment with City bylaw.
- 15.4.10 Mineral Exploration activities authorized under this policy are temporary in character and reclamation shall be completed in accordance with applicable territorial authorization and City standards.
- 15.4.11 This policy does not authorize mining or permanent development. All Mineral Exploration activities remain subject to applicable territorial legislation, First

Nations consultation requirements, territorial environmental assessment processes, and City bylaw.”

2. The Glossary of the Official Community Plan Adopting Bylaw 2022-40 is hereby amended by modifying the existing table by adding definitions for “Established Access”, “Disturbed Area”, “Mineral Exploration”, and “Temporary Equipment Access” in alphabetical order to read as follows:

Term	Definition
Established Access	<p>Established access means any road, route, or cleared corridor that was previously constructed or used for any purpose involving ground disturbance or vegetation clearing, and that is identifiable on the ground by one or more of the following:</p> <ul style="list-style-type: none"> (a) The vegetative mat is absent in the wheel track or travel surface area, consistent with prior sustained vehicle passage, regardless of vegetative regrowth on the corridor margins or centre; (b) An existing roadbed, compacted surface, or corridor width consistent with prior equipment passage remains identifiable; or (c) Cleared corridor margins, stumpage, or cut vegetation consistent with prior clearing activity are present. <p>Restoration of an established access route to passability by selective removal of regrown vegetation with no movement of rock or earth does not constitute construction of a new route. Where regrowth within an established access corridor can be removed by brushing with no movement of rock or earth, selective removal constitutes restoration of established access and does not require Temporary Equipment Access standards.</p>
Disturbed Area	<p>Disturbed Area means land that has been subject to prior ground disturbance or vegetation clearing activity, including but not limited to Mineral Exploration or mining activity, wildland fire management including fuel break and fire smart clearing, quarry or aggregate operations, public utility construction, or any other activity involving ground disturbance or removal of natural vegetation cover, and that has not been formally reclaimed through recontouring, revegetation, or other reclamation measures directed by a regulatory authority.</p> <p>A Disturbed Area is identifiable by one or more of the following:</p> <ul style="list-style-type: none"> (a) Visible evidence of prior excavation, grading, or earthworks including open pits, waste rock piles, sumps, historical drill collars and associated infrastructure or disturbed ground;

	<p>(b) Existing roadbed or cleared corridor consistent with prior vehicle use, where the original corridor is identifiable on the ground regardless of current vegetative cover; or</p> <p>(c) Removal or absence of natural vegetative mat over a continuous area consistent with prior clearing activity.</p>
Mineral Exploration	Mineral Exploration means activities undertaken for the sole or principal purpose of assessing land for its suitability for the production of minerals, including but not limited to drilling and associated drill site preparation, conducted in accordance with a valid authorization issued under the Quartz Mining Act or applicable territorial legislation.
Temporary Equipment Access	<p>Temporary equipment access means access to a Mineral Exploration work area on valid mineral tenure in good standing, achieved by rubber-tracked equipment, or by metal-tracked equipment during winter conditions where required for safe operation, where the following standards are met:</p> <p>(a) No movement of rock or earth occurs, except for the removal of individual obstructions necessary for safe equipment operation, with prior notification to the development officer;</p> <p>(b) The vegetative mat remains intact — incidental compression by approved equipment passage does not constitute removal of the vegetative mat;</p> <p>(c) No trees with a stem diameter exceeding 15 centimetres at 1.5 m above ground are felled, except where removal of an individual tree is necessary for safe equipment operation, with prior notification to the development officer;</p> <p>(d) No equipment blade is used to grade the surface or remove the vegetative mat; and</p> <p>(e) Temporary equipment access shall not exceed a maximum width of 5 metres, with the cumulative area of disturbance under a single Temporary Use Permit not exceeding 0.5 hectares, calculated using actual route length and actual disturbed width, to a maximum width of 5 metres. Cutting shall be limited to necessary, selective cutting to achieve temporary access only.</p> <p>Where temporary equipment access does not involve removal of the vegetative mat or alteration of ground slope or grade, deactivation consists of removal of any felled material and restoration of natural drainage where affected, and confirmation that the vegetative mat remains in place and in</p>

	good condition. Full recontouring and revegetation are not required where grade and slope are unchanged.
--	--

3. The Map 1 – Greenspace Network Plans and Parks forming part of the Official Community Plan Adopting Bylaw 2022-40 is hereby amended by removing an area known as Gem-Keewenaw, and portions of areas known as Chiefs Trend and Arctic Chief-Grafter from the Greenspace or Environmentally Sensitive Areas as indicated on Appendix A and forming part of this bylaw.
4. The Map 5 – Land Use Designation forming part of the Official Community Plan Adopting Bylaw 2022-40 is hereby amended by changing the designation of an area known as Gem-Keewenaw from Greenspace to Future Planning as indicated on Appendix B and forming part of this bylaw.
5. The Map 5 – Land Use Designation forming part of the Official Community Plan Adopting Bylaw 2022-40 is hereby amended by changing the designation of portions of an area known as Chiefs Trend from Greenspace to Future Planning as indicated on Appendix B and forming part of this bylaw.
6. The Map 5 – Land Use Designation forming part of the Official Community Plan Adopting Bylaw 2022-40 is hereby amended by changing the designation of portions of an area known as Arctic Chief-Grafter from Greenspace to Future Planning as indicated on Appendix B and forming part of this bylaw.
7. This bylaw shall come into force and effect upon the final passing thereof.

FIRST READING:

PUBLIC NOTICE:

PUBLIC HEARING:

SECOND READING:

EXECUTIVE COUNCIL MEMBER APPROVAL:

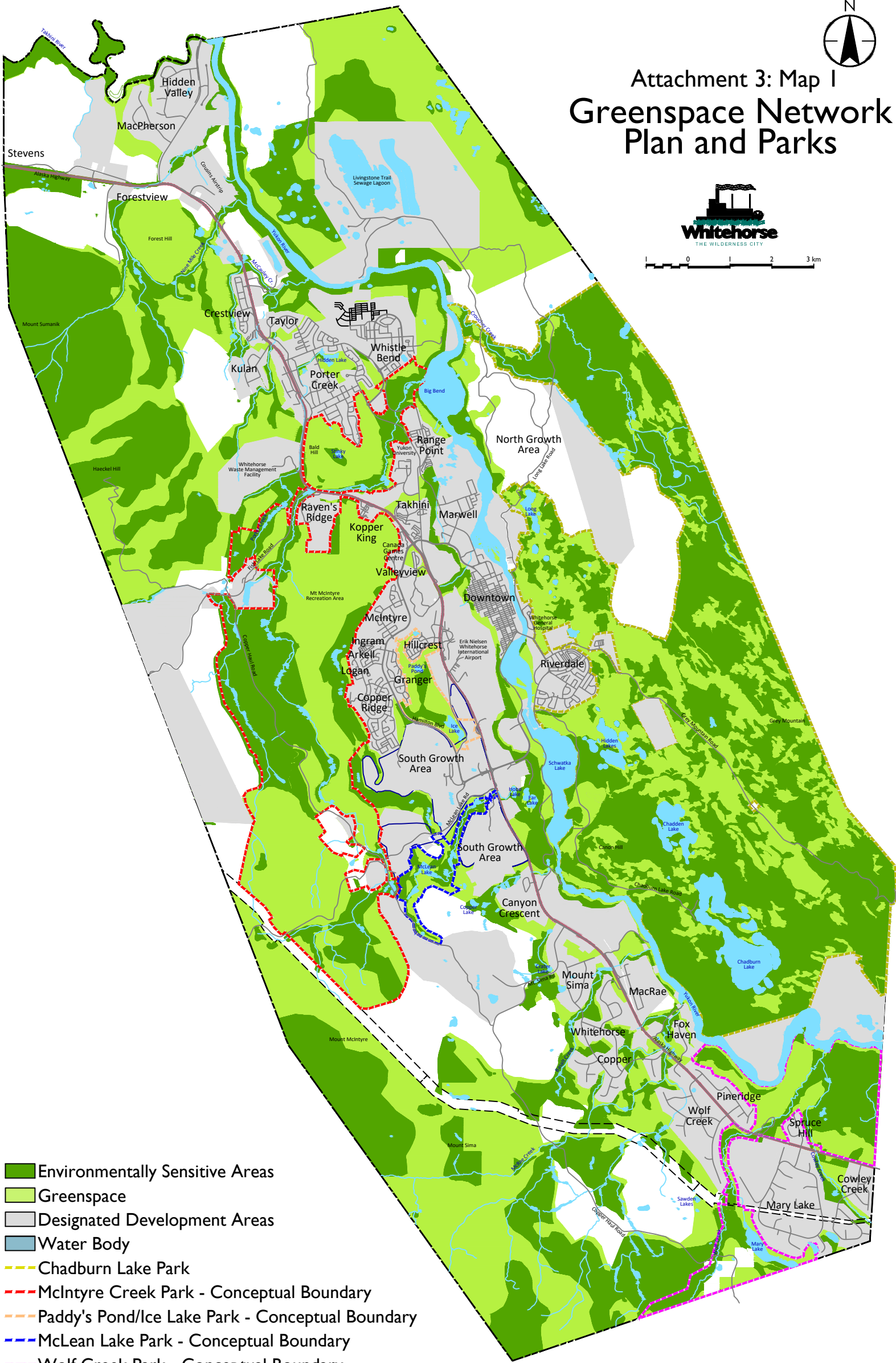
THIRD READING and ADOPTION:

Kirk Cameron, Mayor

Corporate Services



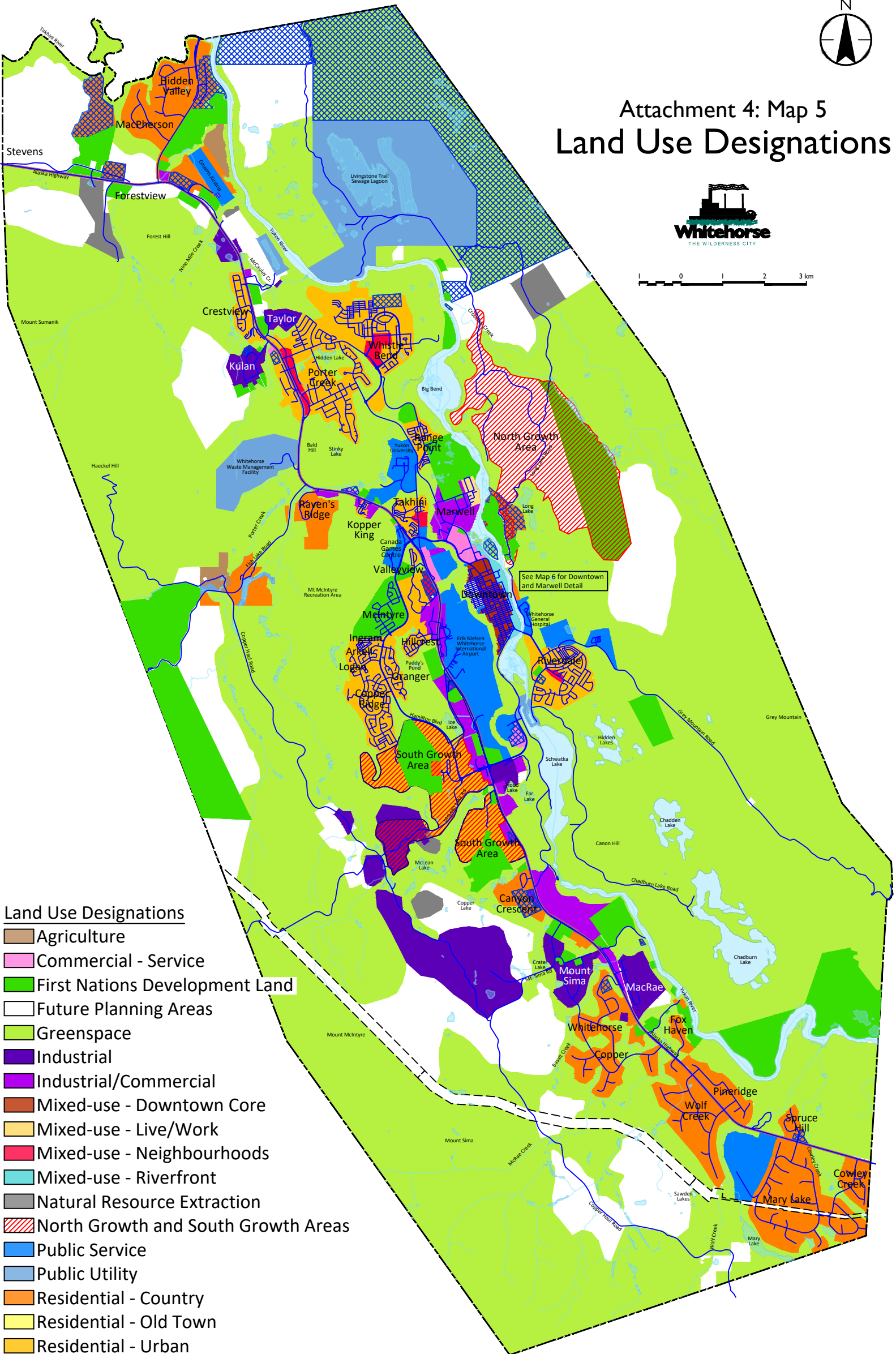
Attachment 3: Map I Greenspace Network Plan and Parks





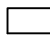











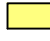


- Environmentally Sensitive Areas
- Greenspace
- Designated Development Areas
- Water Body
- Chadburn Lake Park
- McIntyre Creek Park - Conceptual Boundary
- Paddy's Pond/Ice Lake Park - Conceptual Boundary
- McLean Lake Park - Conceptual Boundary
- Wolf Creek Park - Conceptual Boundary



Attachment 4: Map 5 Land Use Designations



Land Use Designations

-  Agriculture
-  Commercial - Service
-  First Nations Development Land
-  Future Planning Areas
-  Greenspace
-  Industrial
-  Industrial/Commercial
-  Mixed-use - Downtown Core
-  Mixed-use - Live/Work
-  Mixed-use - Neighbourhoods
-  Mixed-use - Riverfront
-  Natural Resource Extraction
-  North Growth and South Growth Areas
-  Public Service
-  Public Utility
-  Residential - Country
-  Residential - Old Town
-  Residential - Urban
-  TKC Lands