






Rezone
From RCM - Comprehensive Residential Multiple Family, **RCM2** - Comprehensive Residential Multiple Family 2, **RCM3** - Comprehensive Residential Multiple Family 3, **RCS** - Comprehensive Residential Single Family, **RCS 2** - Comprehensive Residential Single Family, **PG** - Greenbelt, **PS** - Public Services, **PR** - Parks and Recreation, **FP** - Future Planning
To
RMM - Residential - Multi-Unit Medium Density, **RMH** - Residential - Multi-Unit High Density, **RCD** - Residential - Comprehensive Development, **OPU** - Other - Public Utilities, **PGR** - Parks - Greenbelt Recreation, **PEP** - Parks - Environmental Protection, **PAR** - Parks - Active Recreation

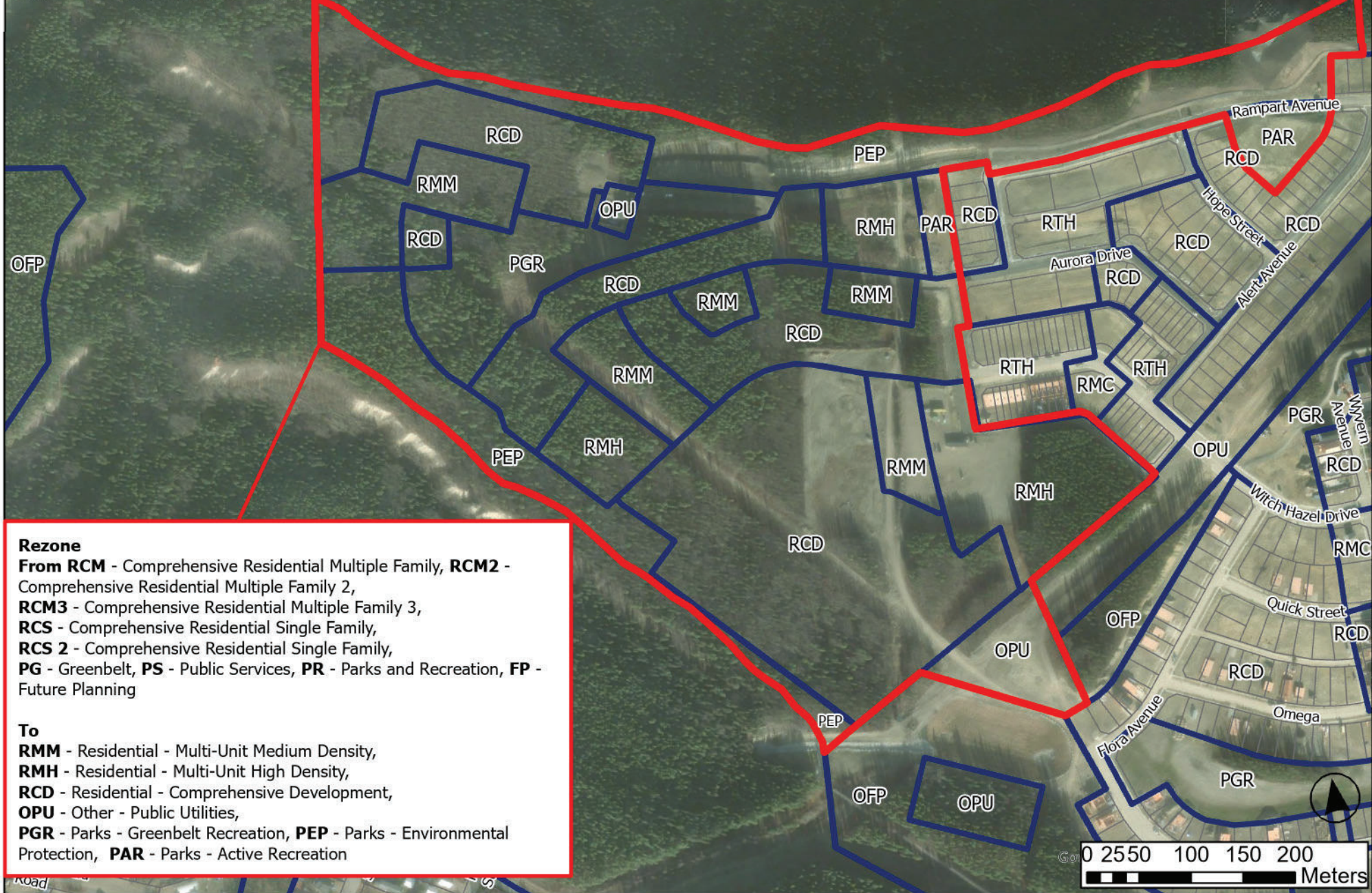
	Subject Site
	Zoning
	Parcel

CITY OF WHITEHORSE - PLANNING AND SUSTAINABILITY SERVICES




Zoning Bylaw Amendment 2026-14

A proposal to amend the zoning of Whistle Bend Phases 9 (Partial), 10 and 11 to enable the re-design of the lot layout.





Rezone
From RCM - Comprehensive Residential Multiple Family, RCM2 - Comprehensive Residential Multiple Family 2, RCM3 - Comprehensive Residential Multiple Family 3, RCS - Comprehensive Residential Single Family, RCS 2 - Comprehensive Residential Single Family, PG - Greenbelt, PS - Public Services, PR - Parks and Recreation, FP - Future Planning
To
 RMM - Residential - Multi-Unit Medium Density, RMH - Residential - Multi-Unit High Density, RCD - Residential - Comprehensive Development, OPU - Other - Public Utilities, PGR - Parks - Greenbelt Recreation, PEP - Parks - Environmental Protection, PAR - Parks - Active Recreation

	Subject Site
	Zoning
	Parcel

CITY OF WHITEHORSE - PLANNING AND SUSTAINABILITY SERVICES

Zoning Bylaw Amendment 2026-14

A proposal to amend the zoning of Whistle Bend Phases 9 (Partial), 10 and 11 to enable the re-design of the lot layout.

